

PHILATELIC TREATS.

A pretty little spread of all sorts.



POSTAGE



H ONE PENNY D

4

POSTAGE



Q TWO PENCE L

17



93



93



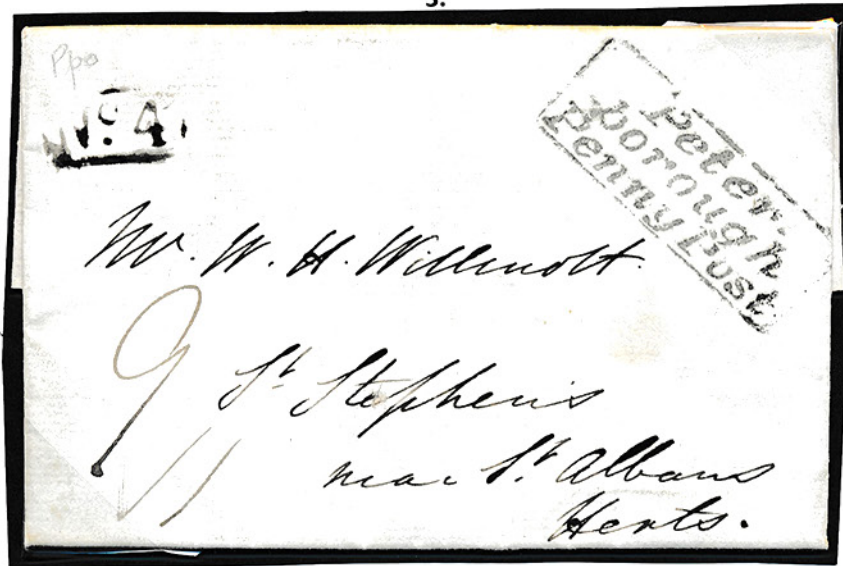
96



1. PETER BOROUGH PENNY POST. A fine strike on 1837 entire letter to ST ALABNS. 'No 4' boxed at upper right. Minor faults but an excellent strike. £70
2. 1d grey black plate 1a showing moderate plate wear. A pristine single lettered EL. Very choice well cut margins. Cancelled by a light, crisp, central and upright Maltese cross in full red. £425
3. 1d grey black plate 1a. showing moderate plate wear. Wonderful balanced margins and a vivid orange – red Maltese cross. A STUNNER. £450
4. Plate 1b. THE 'HD' RE-ENTRY. With excellent margins, large – huge on three sides. The light Maltese cross in red is clear of the re – entry marks. A fine example. £325
5. PLATE TWO. BLUETE PAPER. 1d grey black. A wonderful single lettered TA. With a number of listed varieties:- Ray flaws, vertical guide line NE square. Horizontal guide line NW square. Dot outside T Square, Dot at bottom of A square. Top line weak. The faint blueing to the paper is clear to see and the vertical watermark lines at the sheet edge are also quite clear. A light and crisp maltese cross in orange red. With excellent margins. A very fine adhesive. £525
6. 1d black plate 2. Lettered GI with perfectly cut and balanced margins and a crisp complete maltese cross in black. £325

FORBIDDEN ITEMS

Each foreign country has its own rules governing what may and may not enter its borders through the post. Quite a number forbid the importing of live bees, silkworms, and playing cards. Several states in South America bar police whistles. Others will not admit ostrich feathers, unless made up into boas or hats. The United States, on the other hand, bans all feather except ostrich feathers. It is forbidden to send uniforms to some of the British possession unless the person to whom they are addressed can prove that he has the right to wear them. Among the items barred by the Dutch postal authorities are 'gooseberry bushes or parts thereof', while Tunis positively refuses to admit fresh truffles. The gold coast will have nothing to do with handcuffs or brass knuckle dusters; Ecuador objects to feeding-bottles having rubber or glass tubes; and the authorities in Czechoslovakia will not allow Christmas crackers to enter the country. Parcels coming into this country from abroad have to be examined for dutiable contents. The post office has a working arrangement with the Customs authorities for the collection of the duty, and there is a huge room at Mount Pleasant, filled with long counters, at which incoming parcels are opened and their contents checked through by men who have all the informations concerning tariffs at their finger-ends.



1



2



3



5



6



7



19

THE PORTSMOUTH ROAD



"TO THE LONG PULL UPWARDS TO
THE DEVIL'S PUNCH BOWL."

7. Plate 2 1d grey black. A FABULOUS SINGLE. Lettered EA. Part sheet marginal and showing the letter E doubled. A featherlight maltese cross in red. A stunner. £700
8. 'AMLWCH PENNY POST' cancel in red on 1d black plate 6 together with a light upright maltese cross in black. Lettered DC with 4 perfect margins. Lovely quality and a Brandon certificate accompanies. £625
9. 1d intense black plate 6. Lettered JD. Good – large margins and a clear full and upright Maltese cross in red. Outstanding. £425
10. Plate 8 in red brown. STATE 2. THIRD REPAIR. Obliteration of the 'O' flaw. This 'coincident' re – entry occurred in late 1841 but can still be better matched with 1d blacks lettered PF as only the 'O' flaw was removed and the left side strengthened . Very choice full margined with a fine Maltese cross. £150
11. 1d intense black plate 9. Lettered SG. Excellent margins and a corner maltese cross in black. Very fine. £350
12. 1d black plate 9. A lovely example lettered ID. Very well cut margins and a crisp black Maltese cross. £425
13. BLACK PLATE 9 in red brown. Lettered HJ. Very well cut with a particularly sharp Maltese cross. £110
14. PLATE ELEVEN. 1d grey – black. A superb example of the rarest plate lettered FE. With excellent margins good to large and a featherlight maltese cross in black. The adhesive shows the broad check letter 'E' unlike that of another black plate. Very fine. £2950
15. A BROWN – RED MALTESE CROSS on 1840 2d pale blue plate 1. Lettered QL with margins cut good to large. A full strike , very light and more of a chocolate shade. SUPERB QUALITY.£550

5.



8



9



10



11



12



13



14



18



15



16



20



21



22



23



24



25



26



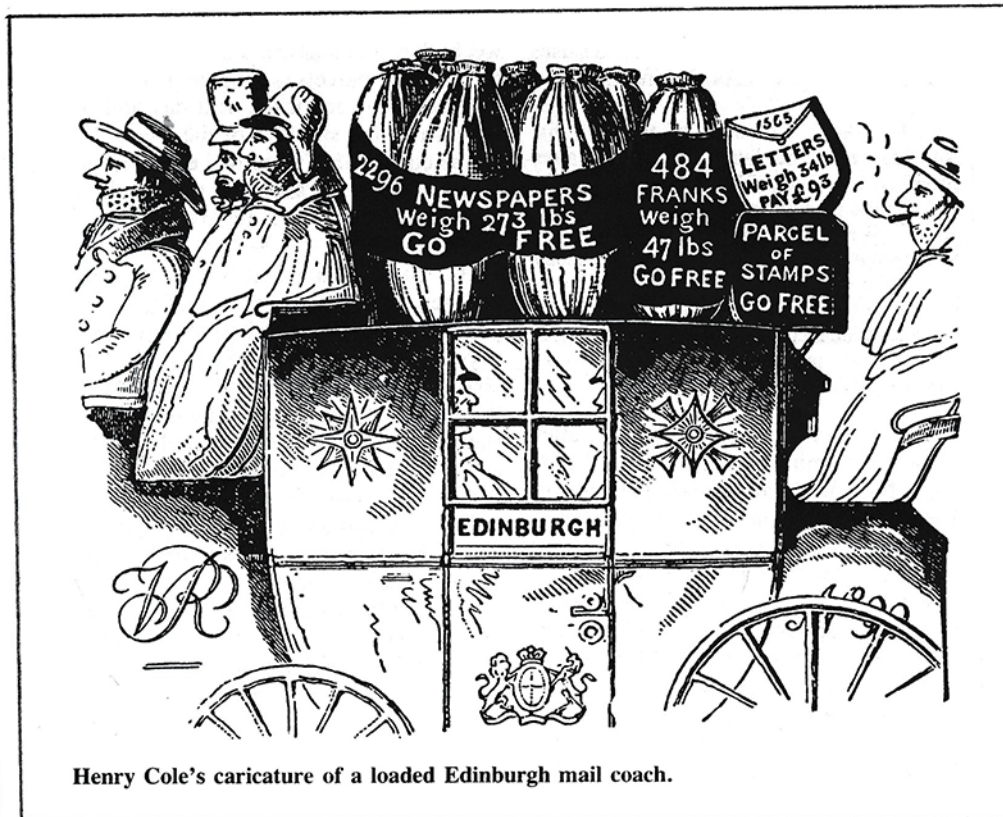
27



28



29



Henry Cole's caricature of a loaded Edinburgh mail coach.

16. 1840 2d pale blue plate 1. Lettered SA. A lovely delicate shade. 4 perfect margins and the lightest possible Maltese cross in red. Full and upright. **£450**
17. 1840 2d deep blue plate 2. The 'QL' RE-ENTRY. Superbly cut. Exceptional colour . A crisp maltese cross in black. One of only two re – entries on this plate. **£725**
18. 1840 2d blue plate 2. A MOST ATTRACTIVE PAIR lettered TA – TB. With fine full margins and two lovely strikes of the Maltese cross in black. **£850**
19. USED CONTRARY TO REGULATIONS. 1840 1d Mulready lettersheet. Addressed to the stamp office Chester and cancelled with a fine black Maltese cross which regulations state that the postmark should cancel Britannia. A superb MOLD CDS at reverse flap for March 5 1841. Barely visible file crease. In wonderfully fresh condition. **£265**
20. Number 12 in Maltese cross. A fine, clear strike on 1841 1d lettered TB. With 4 excellent margins. A fine end to the set. **£180**
21. A DUBLIN DISTINCTIVE MALTESE CROSS. A very fine strike on 1841 1d. lettered PC with good – huge margins. **£80**
22. Number 8 in maltese cross. A lovely crisp strike on 1841 1d lettered QL with full perfect margins. **£75**
23. Number 10 in maltese cross. On 1841 1d red – brown with fine full margins and a lovely clear strike. **£140**
24. 1841 1d. A fabulous single. Plate 26 and lettered PI. Giant margins – a lovely Maltese cross. Finest quality. **£75**
25. THICK LAVENDER TINTED PAPER. 1d red brown. SG B2 (K). lettered LL with a fine complete 575 numeral of NORWICH and 4 EXCELLENT margins. A quite lovely example. **£115**



30



31



34



35



32



33



36



38



40



37



39



41



42



43



51



44



45

Uniforms

If you have read Pickwick Papers do you remember these remarks by Mr Jingle as he looked at himself in the glass after borrowing Mr Winkle's new suit, which did not fit him very well: "Rather short in the waist, ain't it? Like a General Postman's coat - queer coats those - made by contract - no measuring - all the short men get long coats - all the long men short coats. That was a long time ago and things are quite different today. The uniform Clothing Section of the Post Office Supplies Dept at Hook near Surbiton in Surrey stocks hundreds of sizes of coats and caps, waistcoats and trousers. They will fit all normal figures but outsizes are kept as well. No matter what shape a postman is he will get a uniform to fit him. There are more than 100,000 postman of different grades in this country so huge stocks have to be kept.



AN OLD PICTURE OF THE WRECKING OF A MAIL-BOAT

26. 1841 2d blue plate 3. Lettered TC. Full margined and a fine strike. Most attractive. **£80**
27. SG 13 1841 2d pale blue plate 4. FULL SHEET MARGINAL with giant margins showing portions of three adjoining stamps. Shows inscription 'PER ROW OF 12. £2.... A lightly applied 831 numeral of WAKEFIELD. **£220**
28. 1841 2d blue plate 4. Lettered QF. Super margined and cancelled by a crisp 158 numeral of Cambridge. **£60**
29. SG 17 1d. A very striking MIS – PERF **£35**
30. SG 19 2d deep blue plate 4. VFU indeed with a partial crisp London District duplex. **£50**
31. USED IN GIBRALTA. SG 40 1d plate 43 with a crisp 'G' cancel. **£45**
32. SG 47 2d blue plate 14. Superb mint. Fine and very fresh MM. A lovely single. **£185**
33. SG 47 2d deep blue plate 15 superb mint. Lovely rich colour and MM. A fine adhesive. **£225**
34. PLATE NINE. SG 48 1/2d well centred. Lightly used with both plate numbers being perfectly clear. **£285**
35. SG 48 1/2d plate 13 with half a crisp steel CDS. **£35**
36. PLATE 20. SG 48 1/2d. Pristine well centred and UNMOUNTED MINT. Imperf at right with margin showing inscriptional detail. Lovely quality. **£220**
37. SG 48 1/2d plate 20. A lovely single. The plate number is wonderfully clear. **£45**
38. SG 51 1 1/2d plate 1. With 'PD' in oval struck in black. Very fine and unusual. **£120**
39. SG 52 1 1/2d plate 3. With a crisp BEITH steel CDS. With lovely colour. **£70**
40. SG 59 6d. with large – huge margins on three sides. 4th shows overlap of adjoining adhesive. A crisp London district duplex **£185**



46



47



50



48



49



52



53



54



55



56

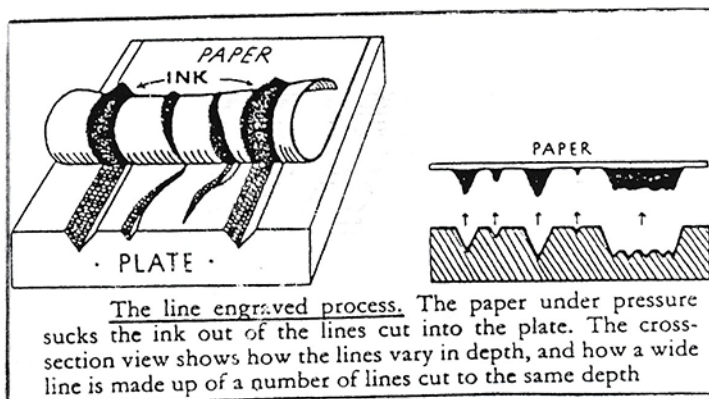


The Times. 6th June 1841.

You must kiss our fair Queen, or her pictures, thats clear.
Or the gummy medallion will never adhere.
You will not kiss her hand you will readily find.
But actually kiss little Vicky's behind.



41. SG 80 4d pale red. Very well centred and a light but clear London steel CDS. Difficult on this issue. **£120**
42. SG 103 3d plate 5. Superb imperforate and OVPTED specimen. Very well cut and wonderful colour **£240**
43. SG 103 3d plate 6. With a crisp YORK ST MANCHESTER steel CDS. **£60**
44. SG 102 3d plate 7. Deep rose. With a crisp and light PARK LANE steel CDS. **£40**
45. SG 103 3d plate 7. VFU with half a crisp BELFAST steel CDS. **£65**
46. SG 103 3d plate 9. VFU with a crisp LONDON CHIEF OFFICE CDS. **£65**
47. SG 103 3d plate 9. A VFU single with a crisp MANCHESTER STOCK EXCHANGE steel CDS. **£65**
48. USED IN BUENOS AYRED. SG 111 9d. with excellent colour and a crisp upright B32 numeral cancel. **£85**
49. SG 117 1/- plate 4. With a crisp upright LONDON steel CDS. **£70**
50. SG 128 10/- greenish – grey. Well centred with excellent colour and an upright registered duplex cancel. **£585**
51. SG 130 5/- rose plate 4. Perfectly centred with outstanding colour and a crisp complete CAMBRIDGE steel CDS. An exceptional example. The delicate blueing is clear to see. **£1850**
52. SG 143 3d plate 19. VFU with a crisp corner IPSWICH steel CDS. **£55**
53. SG 147 6d plate 14. Superb mint. Perfectly centred and lightly hinged. A lovely fresh single. **£225**
54. SG 152 4d vermilion plate 15 USED IN ST THOMAS. A part CDS and C51 numeral. A lovely light cancel. **£95**
55. SG 158 3d plate 21. VFU a superb LIVERPOOL steel CDS. RPS certificate accompanies. **£95**
56. SG 159 3d on 3d. A crisp Brighton and Hove steel CDS. Lovely rich colours. **£95**





57



58



59



60



61



62



67



69



68



69



70



71



72



76



73



64



65



74



75



THE MESSAGES OF LONDON.

The first town postmen in Britain were the messengers employed by William Dockwra in his London Penny Post (1680-2). By the beginning of the eighteenth century bellmen were employed in London; they patrolled the streets every hour, ringing a bell to call people out to collect their mail, or to entrust letters to them for onward transmission. Charles Povey, who organised a halfpenny post, using bellmen, was fined for infringing the Postmaster General's monopoly and several of his bellmen similarly punished. Nevertheless, the Post Office absorbed the bellmen system and this continued in London and most provincial towns until 1885, by which time the use of adhesive stamps and street posting boxes had done away with the need for them.

57. SG 160 4d plate 17. VFU indeed. A pristine WOODCHESTER steel CDS at £65
58. SG 160 4d plate 18. VFU indeed with half a steel CDS for **£60**
59. SG 162 6d on 6d. Superb mint. With lightest hinge remain. Perfect centring and outstanding colour. Very fine. £250
60. SG 162 6d on 6d. VFU indeed. A featherlight LONDON steel CDS for £120
61. SG 163 1/- plate 13 with a lovely crisp ABERDEEN steel CDS. **£90**
62. SG 163 1/- orange – brown plate 14. With a pin sharp GREENOCK steel CDS. A lovely strike. **£165**
63. SG 167 1 1/2d with a crisp BURNLEY steel CDS. **£35**
64. SG 169 5d INDIGO superb mint. A fine MM single with wonderful colour and freshness. **£275**
65. SG 169 5d indigo. Perfectly centred and a lovely crisp corner steel CDS. **£70**
66. KINGSTON – JAMAICA. A superb 1d letter card uprated with SG 197 and SG 172. All cancelled by outstanding strikes of the Kingston – Jamaica CDSs + 'PAQUEBOT' cancel. Slight perf split to card by a remarkable usage. MOST RARE and in such exceptional condition. Very desirable. £225
67. SG 172 1d lilac. CONTROL 'G' without Jubilee lines. A pristine MINT UNMOUNTED corner of sheet block of six. A rare 1st printing multiple. **£185**
68. SG 175 2/6d lilac blued paper. Very well centred and VFU with a crisp GUILDFORD steel CDS for AUG 11 1884. The delicate blue tinge to the paper is clear to see. A faint crease but very finely cancelled and A RARE ADHESIVE. £425
69. SG 178 2/6d. A pin sharp SOUTH SHIELDS steel CDS. **£80**
70. SG 179 2/6d with a wonderful STOCKPORT steel CDS. £90
71. SG 181 5/- crimson. With a lovely crisp and complete LOTHBURY CDS. **£90**
72. SG 183 10/- ultramarine. Perfectly centred, excellent colour and a crisp Glasgow steel CDS. **£350**
73. SG 183 10/-. A lovely example. With a crisp double ringed CDS for Christmas eve 1898. **£170**
74. SG 194 6d. Perfect colour . A featherlight EDINBURGH steel CDS. **£90**
75. SG 195 9d. With fabulous rich colour and a lovely sharp PRIORS MARSTON steel CDS. **£285**
76. SG 212 £1 green. A dazzling single with wonderfully rich colour and a part HATTON GARDENS registered oval. Very well centred . A fine adhesive. £285



78



77



80



81



82



79

THE COMIC SIDE OF SCHOOL LIFE. H J Barker 1887

"Nobody could be happy in the world except for the useful gentlemen what we call a postmen. For how would you know whether those aunts and uncles of your who live right across the fields and rivers was dead if the gentlemen didn't bring a henvelop with black all round? You would think they are still alive and you'd keep on all writing to them. Thet is why postmen ar allis little thin men without beards, cuz they have to keep on walking quick all day. They are not dressed up so fine as soldiers cuz the haven't to go and fight acrost the sea. You never see postment fight, not even with their fists, cuz they havent't got no time with all those letters to take round. I don't think postmen dare even fight boys cuz when me and some boys was a looking at a postman unlocking a pillar box and one of the boys pushed his head in the hole and we all run away: he wouldn't even run after us but only told a police -man when he came round the corner and when he came away from the police -man he was frightened of walking our way past us but jumped on a tramway and shammed not to see us".



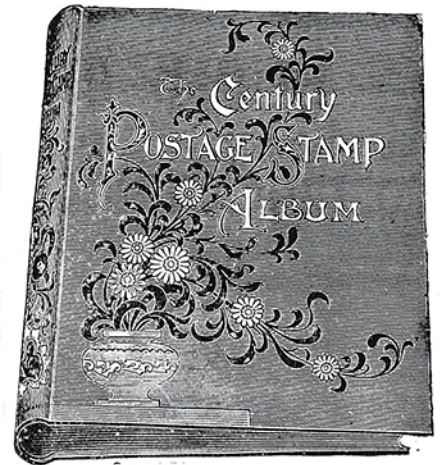
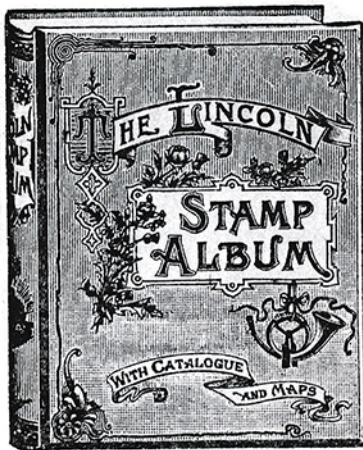
83



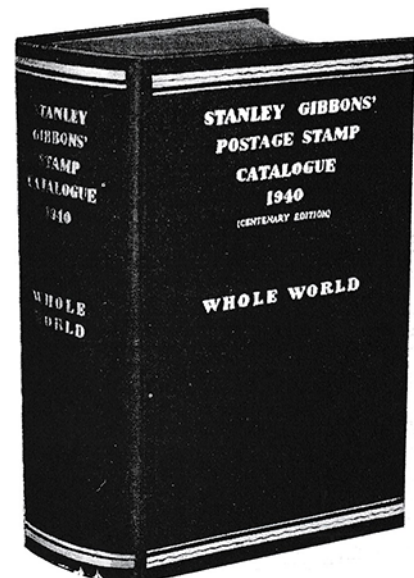
85



84



77. SG 214 1/- green and carmine. VFU indeed. A lovely crisp COWBRIDGE CDS. A wonderfully fresh single. RPS certificate at £90
78. 1890 PENNY POSTAGE JUBILEE POSTMARK on a fine 'FOREIGN POST' card. A very choice strike. **£50**
79. SG 256 M43 (5) 10d dull purple and scarlet (chalky). A wonderfully sharp SOUTHGATE CDS. **£60**
80. SG 260 2/6d. A crisp steel CDS. With lovely full colour. **£75**
81. SG 261 2/6d. A featherlight and upright London steel CDS. Clean, fresh and well centred. **£70**
82. SG 262 2/6 slate purple (chalky paper). A lovely crisp MANCHESTER double ringed CDS. Clear and complete. **£85**
83. SG 263 5/- bright carmine. A very fine and upright WIGAN CDS. **£125**
84. SG 265 10/- ultramarine. With crisp registered oval cancels. The colour is lovely. **£110**
85. SG 266 £1 dull blue – green. With full rich colour and a clearly struck GUERNSEY steel CDS. A lovely example of this Edwardian high value. **£385**



15.



86



87



90



91



92



89



94



97



95



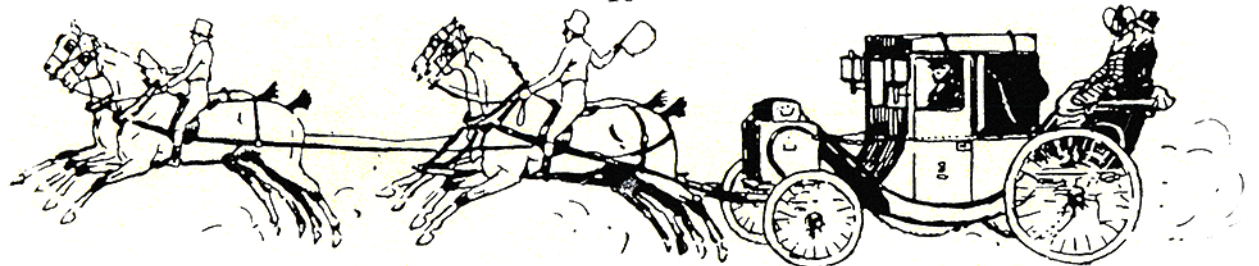
98



99

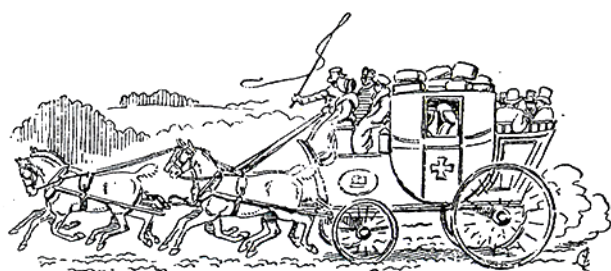


100



A PRIVATE TRAVELLING CHARIOT AND FOUR.

86. SG 307 9d. With a featherlight steel CDS. £40
87. SG 311 M44 (6) 10d dull reddish purple and carmine. A crisp Commercial Rd CDS. £40
88. SG 316 2/6d dull reddish purple. M50 (2). Very choice untouched mint unmounted. £385
89. SG 316 2/6d dull reddish purple. A featherlight. Complete steel CDS. Very fine. 3120
90. SG 326i 1/2d bluish – green .Watermark inverted. Very fine. A London CDS. £55
91. SG 346a 1/2d NO CROSS ON CROWN. A superb WEST COKER steel CDS. £115
92. SG 401 5/- rose - carmine. A fine steel CDS placed to leave a clear profile. £165
93. SG 402 10/- indigo blue. Pristine untouched mint unmounted. Perfectly centred and in AS ISSUED condition. £950
94. SG 404 £1 dull blue – green Seahorse. A pristine UNTOUCHED MINT UNMOUNTED example. In all respects outstanding. £3250
95. SG 405 2/6d deep yellow – brown. A very light Thimble CDS. A lovely example. £120
96. SG 415 2/6d reddish – brown. A TRULY SPECTACULAR TOP OF SHEET BLOCK OF EIGHT. Comprising the first two rows. Pristine unfolded with fully intact perfs. Hinge remains with 4 adhesives MINT UNMOUNTED. A RARE and DAZZLING SEAHORSE MULTIPLE. £1650
97. RMS QUEEN MARY FIRST VOYAGE ILLUSTRATED ENVELOPE. 27 May 1936. A lovely cover in pristine condition. £45
98. SG 014 2 1/2d IR Official. An outstanding block of 4. Crisp PAISLEY steel CDSs. £165
99. SG 015 1/- IR Official. Superb mint. Choice, perfectly centred with single hinge remain. Wonderfully fresh and a BPA certificate accompanies. £440
100. SG 0105 2 1/2d ADMIRALTY OFFICIAL. Superb mounted mint. The centring is perfect. £240

**Fairy**

The town of Fairy, Texas, U.S.A., was originally known as Martin's Gap after a settler who was killed by the Indians and buried in a gap in the mountains.

When a post office was established here in the 1850's the citizens of Martin's Gap asked the United States postal authorities if the name of the town could be changed to Fairy in honour of a popular little midget woman, the daughter of a Confederate captain who had settled the community

