

FROM A COLLECTION OR TWO.



5



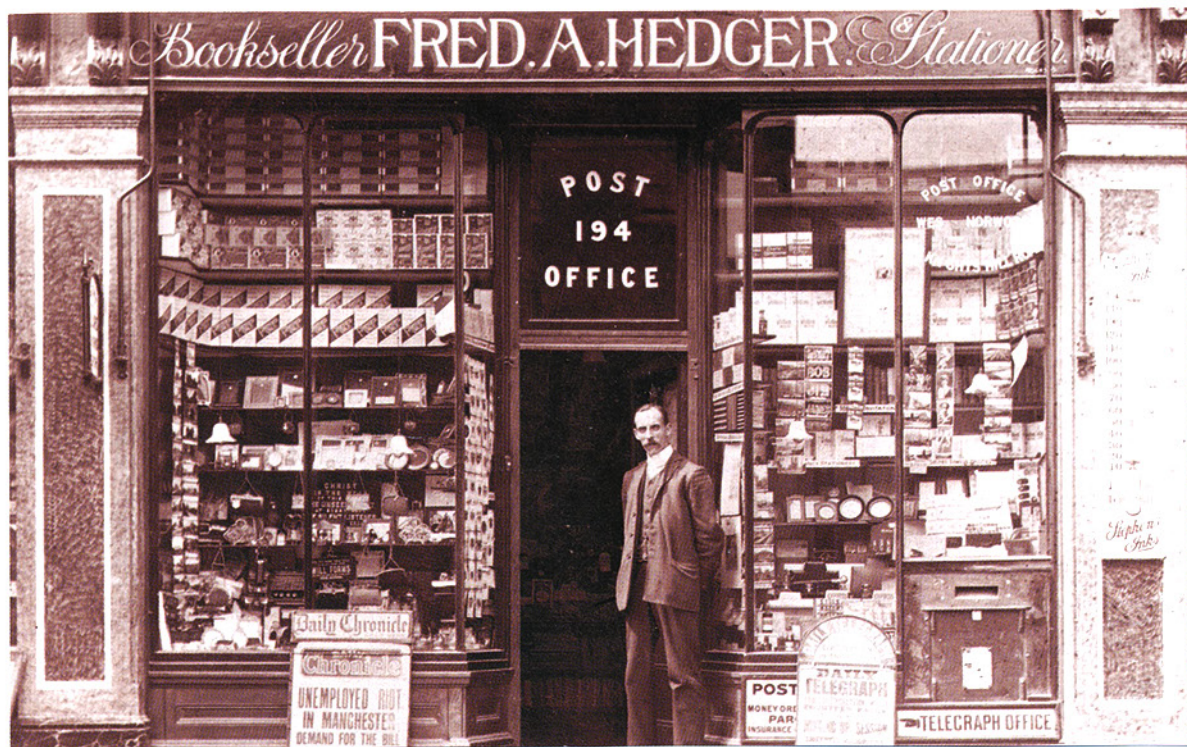
4



17



18



24



33



38



49

Another little spread that I hope might tempt.



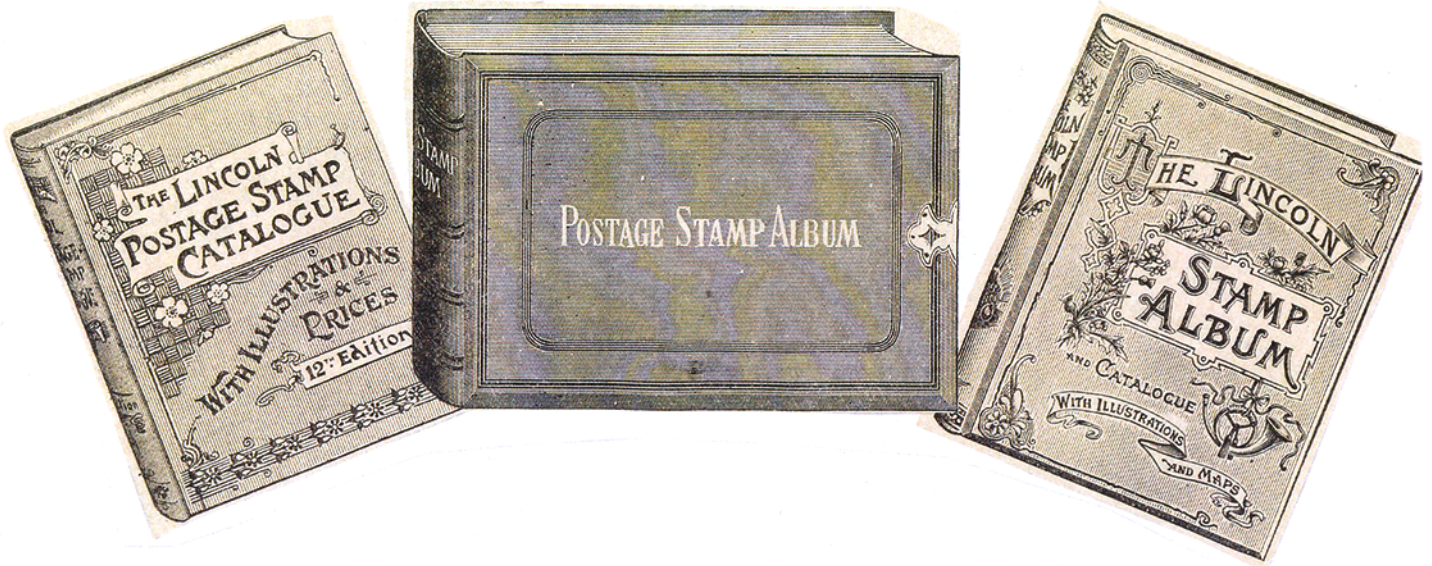
90



47



92



1. 'PAID AT GLASGOW'. A superb strike on entire to COGNAC. An equally fine 'PAID' Tombstone and a good part 'ANGLETERRA' in orange. Endorsed 4.4d. Reverse a superb GLASGOW Horseshoe CDS for June 6 1829. Wonderful strikes. **£84**
2. Plate 1a 1d grey black showing very little plate wear. Lettered GA with good – ENORMOUS margins and a vibrant bright orange – red maltese cross. FABULOUS. **£475**
3. PLATE 1b THE 'HD' RE – ENTRY. With excellent margins, large – huge on three sides. The light maltese cross in red is clear of the re – entry margins. A fine example. **£325**
4. PLATE 2 1d grey black. A FABULOUS SINGLE lettered EA. Part sheet marginal and showing the letter E doubles. A featherlight Maltese cross in red. A stunner. **£700**
5. A STUNNING ADHESIVE. 1d grey black plate 2. Lettered QC with 4 ENORMOUS MARGINS and a pristine strike of a Maltese cross in orange – red. An amazing stamp. **£675**
6. PLATE 2 MATCHED IN BLACK AND RED _ BROWN. Lettered QG. Both letters very high. Both fine full margins cancelled with red and black maltese crosses. **£350**
7. BLUETE PAPER. 1d grey black plate 2 lettered EJ. Very finely cancelled by a partial red Maltese cross. Superbly cut and showing the delicate blueing to the paper. **£450**
8. A RICH BROWN MALTESE CROSS. 1d black plate 4. Lettered QK. With good – large margins and a wonderful maltese cross in brown. **£425**
9. 1d grey black plate 4. Lettered PK. Wonderfully cut and a pale orange – red maltese cross. A lovely example. **£325**
10. REDIRECTED & UPRATED. 1d Mulready envelope sent from London to Weymouth then redirected to bath with the addition of a 1d intense black plate 5. Lettered EE. Good – large margins

THE PENNY POST. STAFF. 1964. ½d CARRIAGE OF 1709.

On October 4, 1709, a suprising individual, by name Charles Povey, impudently challenged the Post Office monopoly by starting a privately run enterprise which he called the "Half-Penny Carriage". It was modelled on very similar lines to the Penny Post of Dockwra, except it was confined to the busy parts of London and Westminster and to the borough of Southwark. Receiving houses were set up in shops and small businesses, and for the price of one halfpenny Povey undertook to collect and deliver letters and packages. He popularized the use of bellmen by having messengers patrol the streets every hour ringing a bell so that people, on hearing, could be waiting with their letters and spared the trouble of going to one of the receiving houses. Doubtless the idea was intended by way of advertisement, but people quickly appreciated its convenience, and his undertaking was popular and successful. Naturally it was quickly suppressed by the Crown. Poveys Half-Penny Carriage lasted exactly seven months, when proceedings were taken against him and was fined £100, along with several of his bellringers and shopkeepers who, having acted as receivers, were fined for their part in the venture.

3.



2



7



1



10



3



6



8



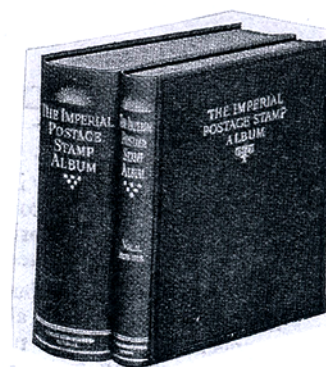
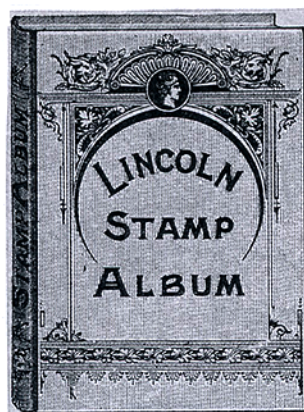
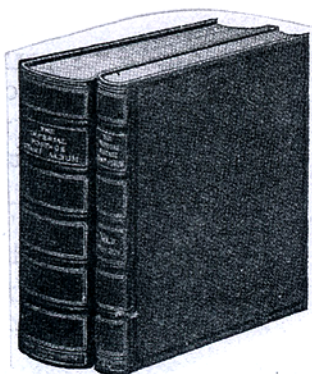
9



23

and a complete orange red maltese cross. Reverse a London dated cross for Sept 24 1840 with an orange Weymouth CDS for Oct 6. Usual minor perimeter dents. A VERY RARE USEAGE. A spectacular redirection. A Brandon certificate. **£3250**

11. 1d black plate 6. A FABULOUS SINGLE. With generous and outstanding margins. Lettered IE. A crisp light and upright maltese cross in orange – red. **THE BEST. £425**
12. BLACK PLATE EIGHT. 1d red – brown lettered LA. Very well cut indeed. A full Maltese cross. **£80**
13. 1d black plate 9. A very choice single lettered IH. A clear ‘O’ flaw. With excellent margins and a dazzling red maltese cross. **£425**
14. PLATE TEN. 1d black lettered IE. A choice well cut single with a crisp maltese cross in black. **£475**
15. BLACK plate 10 in red brown. Lettered OF. A very clear ‘O’ flaw. Excellent margins and a light, upright Maltese cross. **£70**
16. BLACK PLATE ELEVEN. In red – brown. Lettered IK. Perfectly cut and a lovely maltese cross. **£85**
17. 1840 2d bright blue plate 1. AN EXCEPTIONAL SINGLE lettered LA. With margins cut large to HUGE and a dazzling maltese cross in bright orange red. Certainly of exhibition quality. **£1400**
18. 1840 2d blue plate 1. An outstanding adhesive with fabulous margins. Lettered DH. A stunning maltese cross. Crisp and complete. Extra fine. **£750**
19. 1840 2d blue plate 1. Lettered PC. With full choice margins and a complete maltese cross in black. **£365**
20. 1840 2d pale blue plate 1. Lettered PK. With large – HUGE margins. A full Maltese cross and part of another in orange – red. An exceptional adhesive. **£725**
21. 1840 2d pale blue plate 1. Lettered SA. A lovely delicate shade. 4 perfect margins and the lightest possible Maltese cross in red. Full and upright. **£450**
22. 1840 2d deep blue plate 2 CANCELLED IN RED. Lettered IG. Wonderfully cut margins. A lovely strike of a pinkish red Maltese cross. **£575**
23. UPRATED MULREADY LETTERSHEET. Showing a crisp maltese cross and a clear upright ULVERSTONE CDS both in orange with ‘To Pay 2’. Reverse shows a ‘A05’ inspectors mark, also in orange. Light soils but very clean and tidy at face. The lettersheet has been refolded by the sender to make it smaller. Perhaps to accommodate an enclosure, hence the uprate. **£385**





11



12



13



19



14



15



16



20



21



22



25

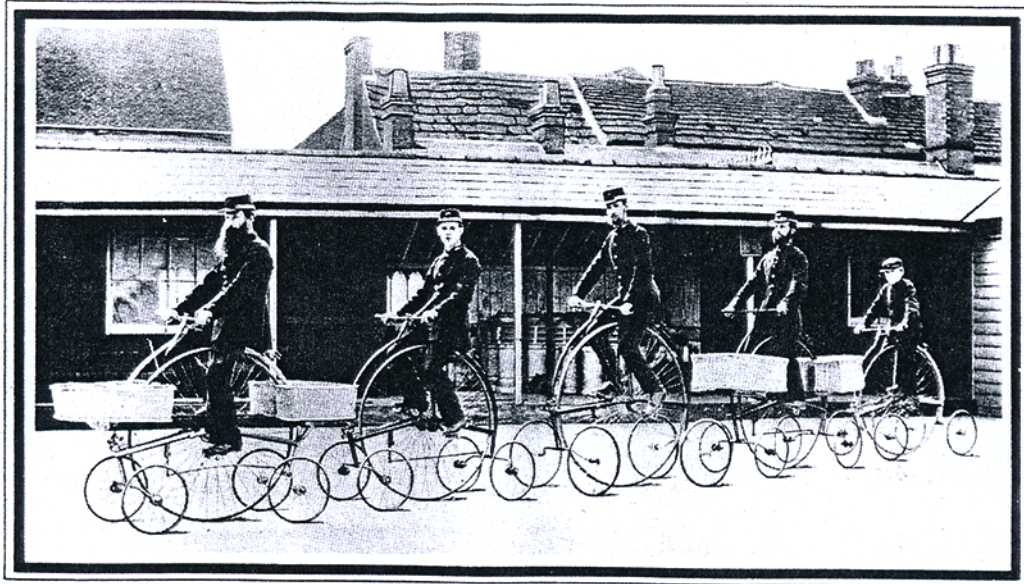


26



27





Centre-cycles at Horsham circa 1883

24. Number 1 in Maltese cross on 1841 1d lettered MI. Full margined and a wonderful strike. **£120**
25. Number 6 in maltese cross on 1841 1d. Fine full margins. A very clear crisp and upright strike. **£65**
26. Number 10 in maltese cross on 1841 1d lettered LB. with excellent margins and a very good strike. **£140**
27. A DESTINCTIVE DUBLIN MALTESE CROSS. 1d red – brown plate 33 lettered HE. With excellent margins on all sides and a lovely clear strike. **£70**
28. A FINE DESTINCTIVE DUBLIN MALTESE CROSS on 1841 1d red – brown plate 18. Lettered CA with perfect margins. **£70**
29. 1841 1d plate 16. Lettered FL with good – huge margins and a lovely Maltese cross crisp, full and upright. **£40**
30. SG 8. 1d red – brown. A fine full margined strip of 4. Crisp London district numerals of Hampstead. **£60**
31. THICK LAVENDER TINTED PAPER. 1d red brown. SG B2 (K). Lettered LL with a fine complete 575 numeral of NORWICH and 4 excellent margins. A quite lovely example. **£115**
32. SG 8a 1d red – brown on deeply blued paper plate 111. A GIANT with margins HUGE – ENORMOUS tied to uncreased envelope by a 575 numeral of Norwich. Good Lynn and Norwich CDSs in blue on reverse. The stamp is magnificent. **£70**
33. SG 10 1d deep red – brown plate 53. A fabulous mint pair lettered EC – ED. With large – huge – ENORMOUS margins and full original gum with single hinge remain. The colour is exceptional. A magnificent pair. **£750**
34. 1841 2d blue plate 3. Lettered KA. Full margins – part sheet marginal at left. A crisp upright Maltese cross. **£130**
35. 1841 2d blue plate 3. A lovely, very well cut single lettered RL. A partial maltese cross. Very fine indeed. **£110**



28



30



29



31



34



37



35



36



44



45



39



40



42



48

36. SG 15. 1841 2d deep blue plate 3. Lettered QE. Fine full margins and an upright maltese cross **£90**
37. SG 19 2d plate 4. A fine well centred strip of three. Cancelled with 242 numerals of Derby. **£120**
38. SG 40 plate 43. TL error of watermark'. A very fine, very well centred example with a featherlight numeral cancel. **£425**
39. SG 43 1d plate 168 and SG 103 3d plate 5 on clean envelope to PARIS. Tied by 258 numerals and CDS of Dover. The 1d also tied by a red 'PD'. French receivers cancels front and back. Nice to have a line engraved and surface printed stamp together. **£70**
40. SG 43 1d plate 202. A side marginal mint unmounted block of 4. Showing inscriptional detail and 'POSTAGE' watermark. Wonderfully centred. A few clipped perfs lower right. A dazzling block. **£140**
41. USED IN MALTA. SG 45 2d plate 7. A clear crisp Malta steel CDS. **£50**
42. SG 46i 2d plate 13. Variety:- WMK INV. A FABULOUS BLOCK OF 6. Well centred with crisp, light NEWPORT CDSs. The inverted watermarks are crystal clear. VERY RARE INDEED especially in such outstanding condition. **£950**
43. SG 52 1 1/2d plate 1. With a crisp and featherlight steel CDS. **£50**
44. SG 58 6d mauve. With 4 margins and showing PORTIONS OF FOUR ADJOINING STAMPS. A crisp light London district duplex. A lovely example. **£425**



Thomas De La Rue,
Pioneer printer of the Victorian era.



Sir ROWLAND HILL.
Portrait in later life.



41



43



50



46



51



52



53



54



55



63



56



57

A JOINT EFFORT

The greatest number of people involved in the design of a single stamp was in 1839-40, when the world's first stamps were being planned. Apart from the 2600 entrants in the Treasury Design Competition the actual stamps were based on an idea Charles and Frederick Heath on a background engine-turned by Jacob Perkins.



58



59



60



61



62



66



67

45. SG 59 6d dull lilac. With full excellent margins and showing portions of three adjoining adhesives. A light London district cancel. **£375**
46. SG 98 9d straw. With strong colour and a Liverpool CDS for 12 OCT 1866. Very difficult. **£190**
47. SG 103 3d rose plate 7. A quite lovely BLOCK OF 4. Crisp 1092 Telegraphic cancels. **£225**
48. SG 102 3d deep rose plate 8. A handsome block of 4. Each adhesive a crisp CANNON ST Steel CDS. The depth of colour is wonderful. **£160**
49. SG 117 1/- plate 4. A PAIR FROM THE CORNER OF THE PANE cancelled by a crisp complete C30 duplex of VALPARAISO. A glorious piece. **£275**
50. SG 127 5/- pale rose plate 2. Perfectly centred with a single, light 447 numeral of Leeds. Most attractive. **£240**
51. SG 146 6d deep grey plate 13. A lovely single with a light steel CDS. Excellent shade. **£110**
52. SG 150 1/- green plate 10. With a lovely light steel CDS. Rare this fine. **£160**
53. SG 157 2 1/2d plate 23. With a wonderful EDINBURGH double ringed CDS – full and upright **£50**
54. SG 159 3d on 3d. Perfectly centred with a choice COLEFORD steel CDS perfectly struck. Exceptional. **£140**
55. SG 169 5d indigo. VFU indeed. A crisp BRIGHTON H.P.O (Head Post Office) CDS. RPS certificate. **£90**
56. SG 172 1d lilac. A 'G' CONTROL PAIR without Jubilee lines from the first printing. The control single is mint unmounted. **£110**
57. SG 172 1d lilac. A 'H' CONTROL PAIR without Jubilee line from the first printing. Superb mint with the control single being unmounted. **£80**
58. SG 178 2/6d. VFU a lightly applied LOMBARD STREET steel CDS. Lovely condition. **£80**
59. SG 178 2/6d. A pin sharp SOUTH SHIELDS steel CDS. **£80**
60. SG 180 5/- rose. A very fine example. A crisp BANGOR steel CDS. Lovely fresh single. **£95**
61. SG 183 10/- ultramarine. A very choice example. A lovely crisp LEEDS steel CDS. **£375**
62. SG 183 10/- ultramarine. With a crisp oval cancel. With perfect colour and freshness. **£175**
63. SG 191 3d lilac. Very choice with a crisp complete and upright WRAYSbury CDS. THE BEST. **£90**
64. SG 194 6d. Perfectly centred a light crisp MONK BAY steel CDS. Very fine. **£165**
65. SG 207 5d Die 2. With a crisp upright London hooded CDS. **£40**
66. SG 207a 5d. A post office fresh mint unmounted block of four. **£115**

Post Prandial.

From time to time we receive mildly mauled envelopes on which apologetic postmasters have written cryptic notes like 'damaged by snails'. At first we thought this had something to do with the speed of delivery, but apparently snails have taste for the gum on the envelopes and postage stamps and lurk in pillar boxes waiting for their favorite nosh to be delivered to them. So bad is the problem in some areas that pillar boxes are treated with pellets to kill the gourmet gastropods.



64



65



68



69



70



71



72



73



75



76



77



78



84



79



74



80



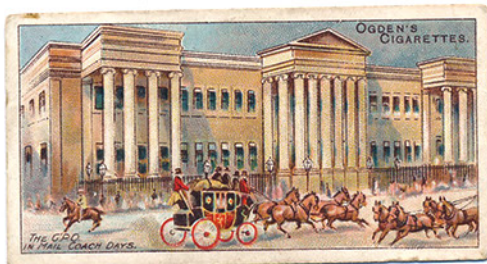
81



82



83



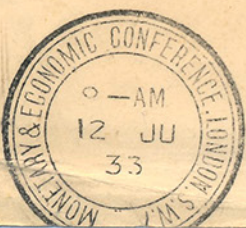
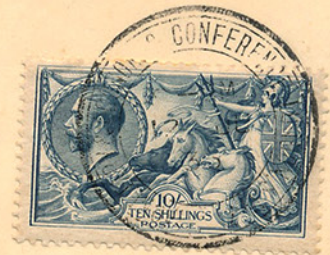


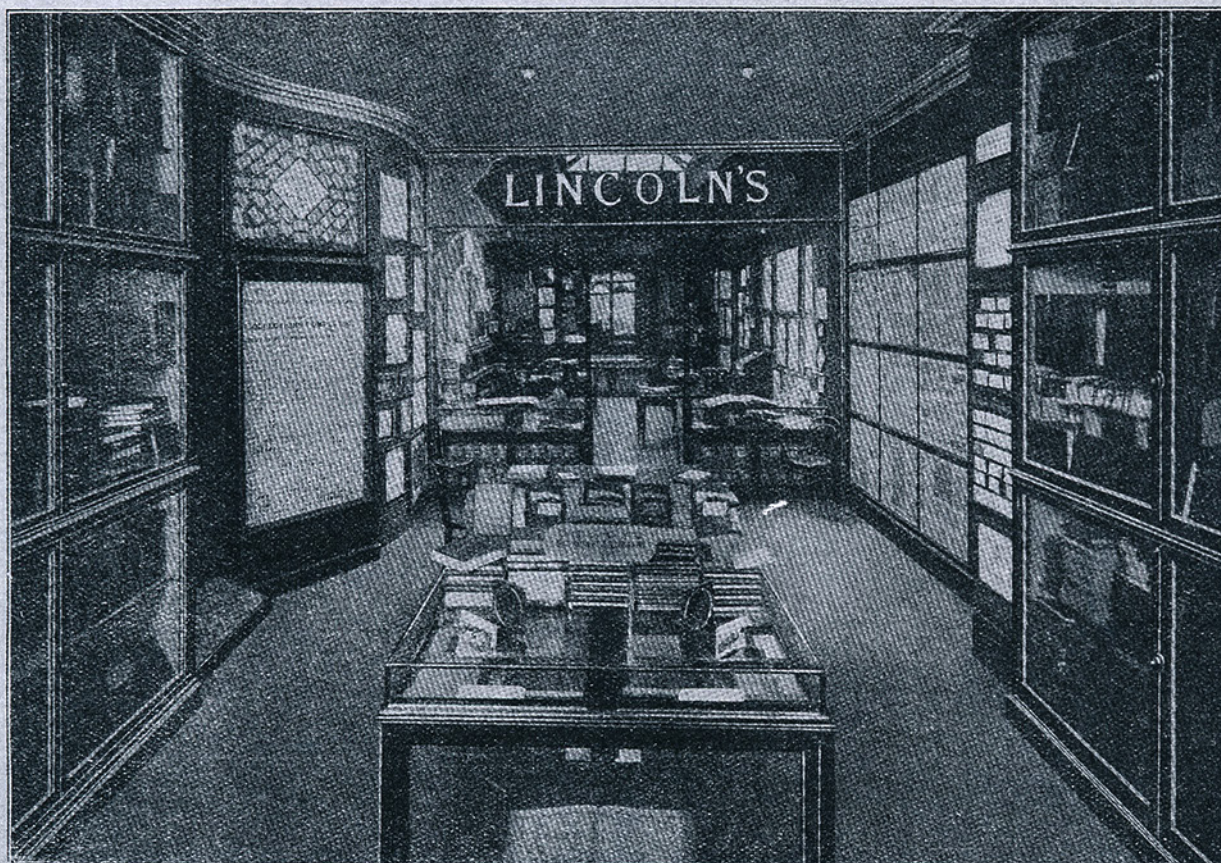
Knight at a joust giving a letter to a messenger (1441).

67. SG 205 4d and 210b 10d both with interpane margins attached and tied to piece by CDSs. **£45**
68. AINTREE GRANDSTAND CDS on SG 208 6d. A scarce postmark one rarely see's. **£50**
69. SG 214 1/-VFU indeed. A particularly crisp HALESOWEN steel CDS. **£55**
70. SG 239 4d brown – orange. A superb CDS example of this difficult shade. Perfectly centred – outstanding colour. **£70**
71. SG 250 9d. VFU indeed. A tiny part corner CDS. **£40**
72. SG M43 (4) slate purple and deep glossy carmine. A rubber CDS. Well centred. A rare and striking shade. At **£250**
73. SG 257 1/-. A wonderful block of four. Tied to piece by crisp SOUTHAMPTON HEAD TELEGRAPH Office CDSs. The colours are rich and vivid. **£90**
74. SG 257 M45 (2) 1/- dull green and bright carmine. A light complete WATERLOO steel CDS. **£40**
75. SG M45 1/- dull green and bright carmine. (F) barest hinge trace. A fine unlisted shade. A Hendon certificate. **£85**
76. SG 260 2/6d. A crisp central district office CDS. Crisp and clear. **£90**
77. SG 260 2/6d. with a crisp ST LEONARDS GREEN steel CDS. **£95**
78. SG 262 2/6d dull purple. With a crisp BERNERS ST steel CDS. **£90**
79. SG 264 5/- deep bright carmine. A rarely seen strip of 4. Featherlight CDS to each adhesive. A STRIKING MULTIPLE. **£285**

EXTENDED PAYMENTS.

I am very happy to offer extended payment on any items you would like to add to your collection.
In this way you can fill those gaps that would otherwise remain empty.

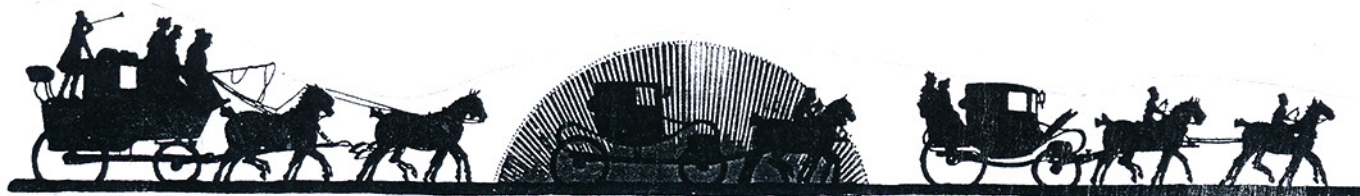




INTERIOR VIEW OF W. S. LINCOLN'S PREMISES, 2, HOLLES STREET, OXFORD STREET, LONDON, W.
THE LARGEST STAMP SHOP IN THE WORLD.

1920

80. SG 274 1d deep carmine M(6). Superb LTLY MM example. The colour is wonderful. A Hendon certificate accompanies. **£385**
81. SG 295 6d royal purple. VFU indeed with a light REGENTS ST steel CDS. **£55**
82. SG 306 9d reddish purple and light blue. VFU indeed. Half a steel CDS. **£40**
83. SG 311 M44 (6) 10d dull purple and carmine. A lovely light steel CDS. **£50**
84. SG 316 2/6d dull reddish purple. M50 (2). Very choice untouched mint unmounted. **£385**
85. SG 317 2/6d dark purple. With half a Cannon St steel CDS. **£90**
86. SG 319 10/- deep blue M54 (3). A choice untouched mint unmounted example. A Hendon certificate accompanies. **£1450**
87. SG 346 and 350b. 1/2d and 1d pristine full margined imperf pair. Both superb mint unmounted. **£265**
88. SG 346a 1/2d NO CROSS ON CROWN. A superb WEST COKER steel CDS. **£115**





89



85



91



86



88



94



87



95



96



97



98



99



100

In the fifteenth century, in order to send a letter, people had to find their own means. There were the regular 'common carriers' of goods, and sometimes a traveller, or maybe a soldier going in the right direction, might be found who could be relied on to deliver the letter unless of course it was possible to send ones own servant. It seems messengers were usually paid before setting out, but references to payments are scanty. The Church too, had a postal system which had developed from earliest times, as well as the Universities, whose messengers went from one city to another throughout the land.

89. SG 346b. A SUPERB IMPERFORATE INTERPANE BLOCK OF 4. Fine full margined with 2 single pristine unmounted mint. **£550**
90. SG 401 5/- rose – carmine. A fine steel CDS placed to leave a clear profile. **£165**
91. SG 411 10/- deep blue de la rue printing. A block of four. Outstanding colour and MOST RARE IN MULTIPLES. **£850**
92. SG 412 10/- blue. A lovely example. A light and crisp DURRINGTON CAMP. SALISBURY CDS. Very fine. **£385**
93. 1933 MONETARY AND ECONOMIC CONFERENCE. Large sheet bearing 1/2d - £1 PUC. All tied by special CDSs for 12 June 1933 The seahorses are SG 413a – 417. Slight creases to lower edge which does not affect the £1 PUC. All pristine . A truly magnificent show piece for the collection. Spectacular item. Incredible. (ILLUSTRATION SLIGHTLY REDUCED). **£950**
94. 1934 photogravure 1 1/2d colour trial. Choice full margined LTLY MM. Striking. **£90**
95. SG 015 1/- IR Official. Superb mint. Choice, perfectly centred with single hinge remain. Wonderfully fresh and a BPA certificate accompanies. **£440**
96. SG 015 1/- IR Official. Superb full colour and a light crisp Manchester registered oval. **£90**
97. SG 071 4 1/2d GOVT PARCELS. Superb mint with lightest hinge trace. A lovely fresh adhesive. **£225**
98. SG 071 4 1/2d GOVT PARCELS. With parts of 3 light CDSs. Lovely fresh colours. **£85**
99. SG 067 9d GOVT PARCELS. With a full, light steel CDS. **£70**
100. SG 072 1/- GOVT PARCELS. A choice single with a corner CDS. **£165**

The Human Express Packet

It is not generally known that it is possible for a person to post himself. Under the Exceptional Express service a regulation first made its appearance in the Post Office Guide of 1905, to the effect that 'Postmaster may arrange for the conduct of a person to an address by an express messenger'. The object of the regulation is to help strangers to find their way in a district with which they may be unfamiliar. The first man to make use of this service was Mr Henry Turner, of Guernsey, who on the morning of July 5 1905 presented himself at the Smith Street office and demanded to be expressed to the Post Office at Sark. He paid a fee of 5s 10d, and was handed into the care of an express messenger named William Gurney who was provided with a stamped form instructing him to deliver Mr Turner to the Sark office and bring back a receipt. The lad took charge of Mr Turner conducting him to the pier where they boarded a steamer. During the crossing while Mr Turner strolled up and down the deck, the express messenger followed him closely all the time, never allowing him to get beyond arms length away. On arriving at Sark, the human express packet was guided straight to the Post Office and was delivered to the Postmaster, which receipted the messenger stamped form to show that he had carried out his task according to the regulations. Later another member of the public went one better than this in an effect to find out just how much the Post Office would do, he posted himself on a bicycle and was accepted as a postal packet.

