

# A TREAT OR TWO.



11



23



100



25



93



Time to fill that gap



45



46



47



55



64



70



69



75



84



96



97



98





1. 1d Grey Black plate 1a showing moderate plate wear. A pristine single lettered EL. Very choice well cu margins. Cancelled by a light, crisp, central and upright Maltese cross in full red. **£425**
2. PLATE 1a VERY WORN IMPRESSION. Lettered TF with 4 outstanding margins and a featherlight Maltese cross in red. This really is a magnificent example. **£450**
3. 1840 1d BLACK. PLATE 1b SUPERB MINT. An outstanding example lettered JF with 4 balanced margins. With large part original gum and excellent colour and freshness. A Brandon certificate accompanies. A lovely adhesive. **£4250**
4. PLATE 1b. THE ORIGINAL PLATE 1a 'HB' RE-ENTRY. A full Maltese cross in orange-red with margins cut good-large-ENORMOUS. A fabulous single. **£485**
5. PLATE TWO. BLUETE PAPER. 1d Grey Black. A wonderful single lettered TA. With a number of listed varieties:- Ray flaws, vertical guide line NE square. Horizontal guide line NE square. Dot outside T square. Dot at bottom of A square. Top line weak. The faint blueing to the paper is clear to see and the vertical watermark lines at the sheet edge are also quite clear. A light and crisp Maltese cross in orange red. With excellent margins. A very fine adhesive. **£525**
6. Black plate 2 in Red-Brown. Lettered SC. Well cut and a crisp Maltese cross. **£160**
7. BLACK PLATE 2 IN RED-BROWN. Very fine single lettered PA and showing a clear 'Double P'. Margins good-huge showing part of adjoining stamp. **£220**
8. WORN PLATE 4. 1d Grey Black. Lettered TA. Part sheet marginal. Very well cut. A corner Maltese cross in orange-red. Shows excellent plate wear above 'ONE PENNY'. A beautiful adhesive. **£525**
9. 1d Grey Black plate 4. Lettered PK. Wonderfully cut and a pale orange-red Maltese cross. A lovely example. **£325**

Extract from The Foundations of Philately.

Hand Gumming Stamps.

In the early days, gum was applied by hand. When this is done it is usually painted on with a brush, very much as you would apply paste to wallpaper. Hand gummed stamps generally show the gum to be unevenly applied and streaky, frequently the brush strokes are visible. In some instances hairs from the brush may still be seen in gum. After a sheet of stamps was gummed by hand it was hung up to dry before going on to the next step in production.



3.



4



12



21



1



2



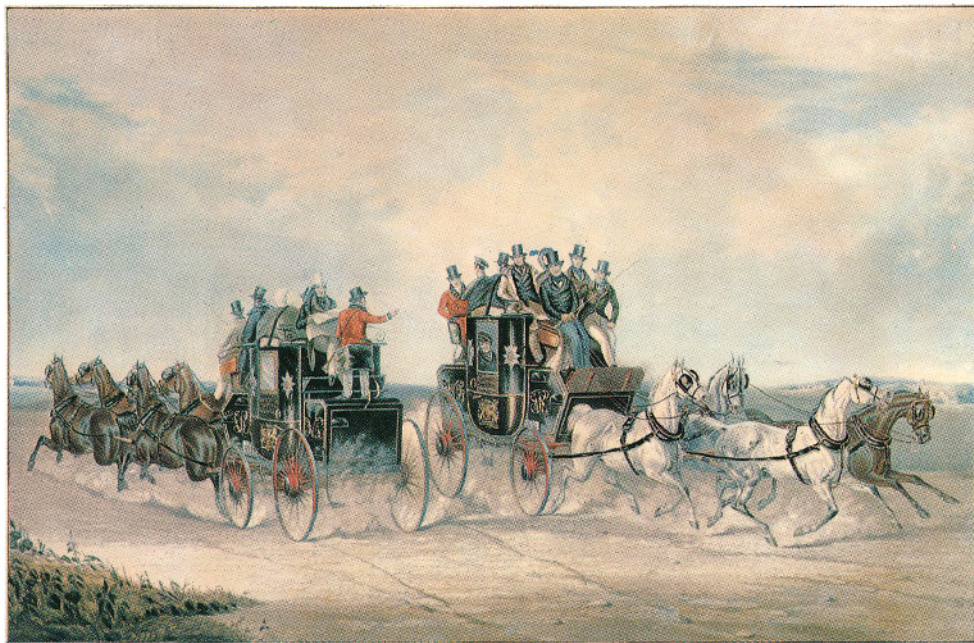
3



5



6



7



8



9



10



13



14



17



15





10. 1d Black plate 6. Lettered FL with large-HUGE margins and a crisp, upright Maltese cross in black. **£325**
11. THE WHITE MALTESE CROSS OF CIRENCESTER. 1d black plate 8. Lettered NE. 4 fine margins and unusually still with original gum. Cancelled with a perfect Maltese cross in WHITE. An amazing combination. Rarely seen. VERY CHOICE AND STRIKING. Comes with photocopy from 'The Maltese Cross' by Jackson giving comprehensive detail and background on this fascinating cross. **£950**
12. 'MORE TO PAY'. 1d Black plate 8. Lettered Aj with part sheet margin at top and with margins good-large other three. Ties to piece by a red Maltese cross and additionally by a 'MORE TO PAY' double ringed CDS in black. An impressive piece. **£375**
13. Black plate 8 in Red-Brown. A superb example lettered DD. Showing a clear 'O' flaw. Very well cut and a light, crisp Maltese cross. **£90**
14. BLACK PLATE EIGHT. 1d Red-Brown lettered LA. Very well cut indeed. A full Maltese cross. **£80**
15. PLATE NINE. 1d Red-Brown lettered CE. Perfect margins and a lovely, complete and upright Maltese cross. Superb. **£110**
16. PLATE 10. 1d Grey Black. Lettered QK. Choice margins and a light, upright Maltese cross in black. Very fine. **£425**
17. BLACK PLATE 10 IN RED-BROWN. Two singles with large-huge margins. Both plate 10. Together on piece with light Maltese crosses. **£160**

BEHIND THE LETTERBOX. Chesmore. 1938

Bang! went the door of the Post Office. An irate gentleman strode heavily towards the counter. He looked like a retired army officer. His face was very red. His eyes gleamed. He thumped the counter with a fist that resembled a club, and in his best parade-ground manner he roared: "I'd like to shoot the whole lot of you". The counter clerk fixed him with a cool polite glance, and in the soft voice that is supposed to turn away wrath, she replied, "Certainly sir. They will supply you with a gun licence at the other end of the counter!"



5.



22



16



18



24



25



26



19



20



27



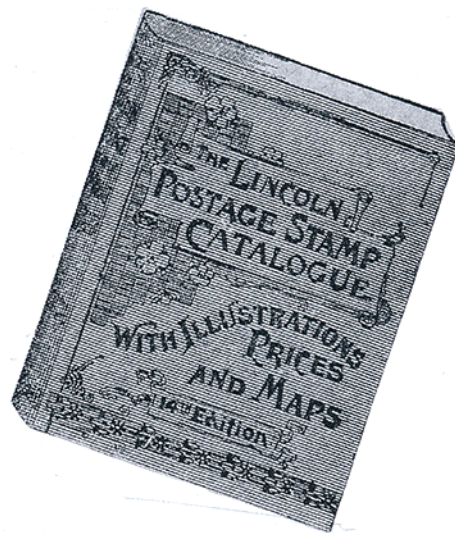
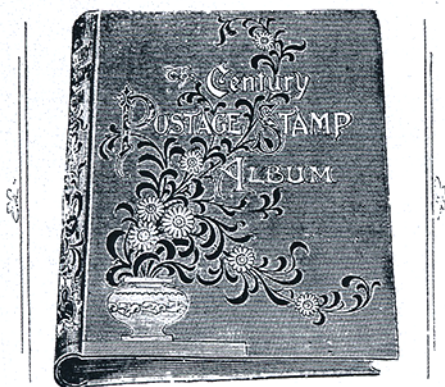
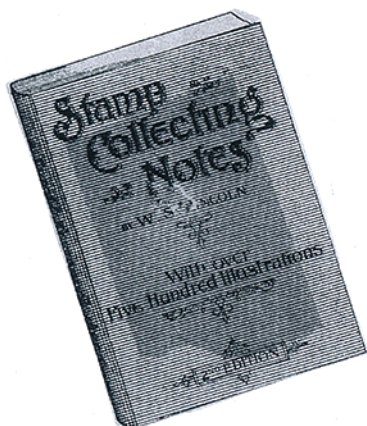
29



30







18. BLACK PLATE ELEVEN 1d in Red-Brown. Lettered LJ. Very well cut and a crisp complete Maltese cross. **£90**
19. 1840 2d Blue plate 1. A lovely single lettered AG. Perfect margins and a crisp upright Maltese cross in orange-red. **£450**
20. 1840 2d DEEP BLUE plate 1. With four choice margins. Lettered KH. A complete Maltese cross in black. The colour is exceptional. **£325**
21. 1840 2d DEEP BLUE PLATE 2. THE 'QL' RE-ENTRY. Superbly cut. Exceptional colour. A crisp Maltese cross in black. One of only two re-entries on this plate. **£725**
22. 1d MULREADY ADVERTISING LETTERSHEET to Portman Square. CANCELLED CONTRARY TO REGULATIONS with a black Maltese cross to right of centre. A fine Reading CDS for April 18 1841. Within an advertisement for THE BRITISH AND COLONIAL TRUST AND ASSURANCE COMPANY. The Mulready is FINE UNCREASED and in lovely fresh condition. **£325**
23. NUMBER 4 IN MALTESE CROSS. A FABULOUS STRIKE on 1841 1d Red-Brown. Very well cut. The hardest number to fine and this cannot be beaten. Incredible strike. **£325**
24. A DUBLIN DISTINCTIVE MALTESE CROSS on 1841 1d lettered GI. Perfectly cut. Crisp and upright strike. **£80**
25. DOUBLE LETTER 'J' 1d plate 22 1d. Fine full margins and a crisp Maltese cross. **£40**
26. From the corner of the sheet. SG 9.1d Pale Red Brown lettered TA. A featherlight London District Duplex. Lovely. **£50**
27. AN IRISH DIAMOND IN BLUE. A superb strike of the 317 numeral of MACROON in Cork on a choice 1844 1d lettered CK. Beautifully cut. Very fine. **£110**
28. 1842 1d Pale Red-Brown. A crisp TOWN CDS. SG 9 1d lettered BF from plate 25. Excellent margins. The CDS is pin sharp. **£350**
29. SG 13. 2d pale Blue plate 4. A fine full margined single lettered EL with part sheet margin at right. A crisp upright London District duplex cancel. **£85**
30. SG 14 2d Blue 4. With fine full margins and Queens features clear of a numeral cancel. Shows a clear SHIFTED TRANSFER at top. **£75**



7.



31



41



39



32



36



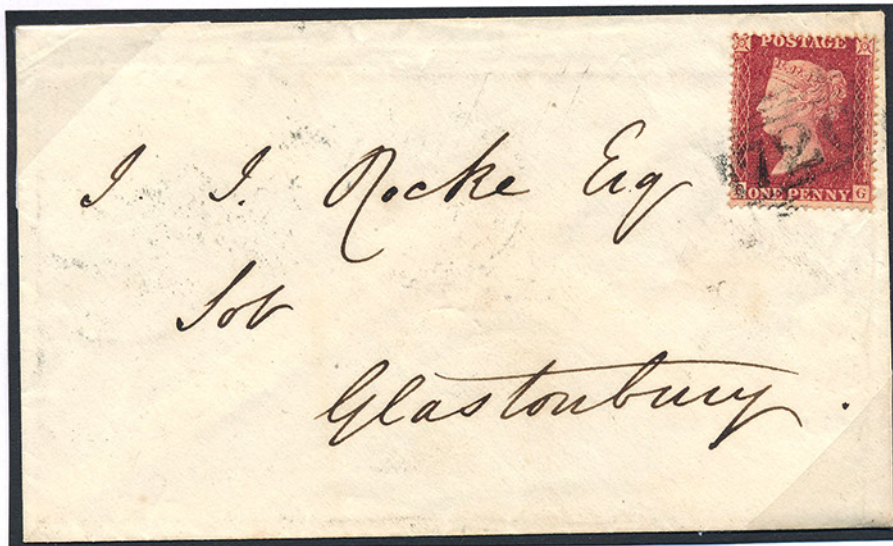
35



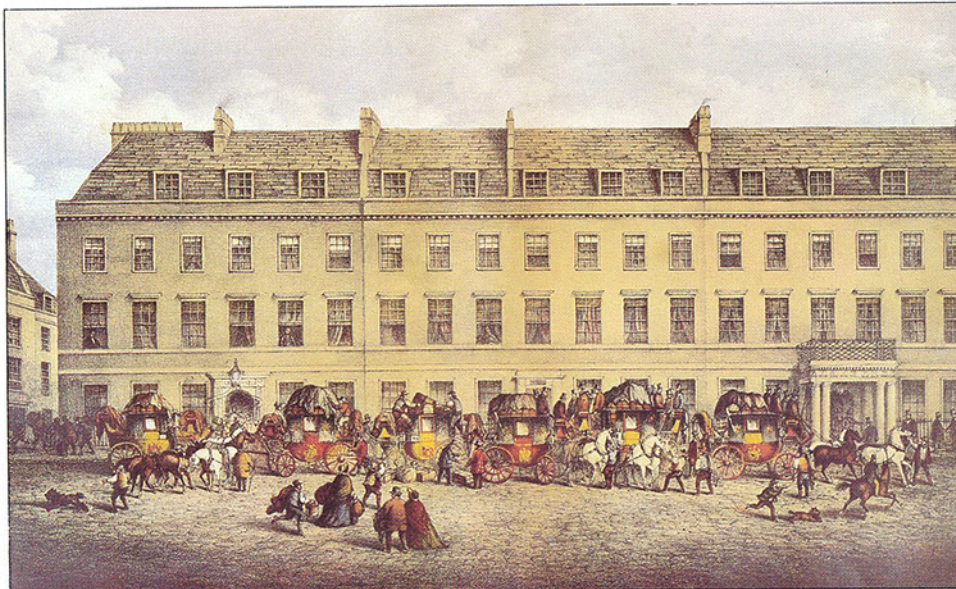
37



38

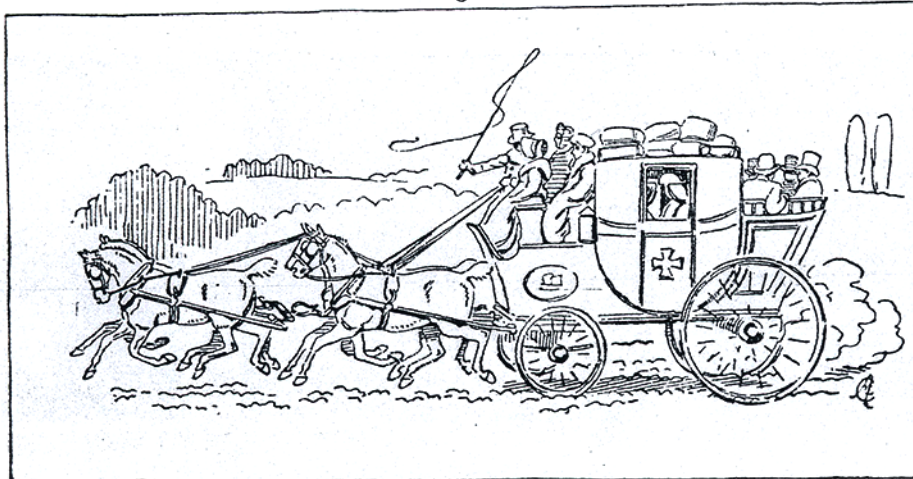


34



ROYAL MAIL COACHES AT THE WHITE HART INN c 1825





AN EARLY MAIL COACH.

31. 1841 2d Blue plate 4. A SPLENDID BLOCK OF 4. QA-RD. Lightly used with 4 choice margins. Very fine. Rarely seen this nice. £450
32. SG 20 2d Pale Blue plate 4. Very finely used. A lovely example. **£60**
33. SG 29 1d Red-Brown. SUPERB MINT. Excellent centring, outstanding colour and freshness. Original gum and hinge remains. Very fine. £160
34. SG 36 1d. A fine example. Tied to clean envelope to Glastonbury by a light 720 numeral of Somerton. Reverse:- Fine Taunton, Glastonbury, Somerton and Bath CDSs. Wonderful strikes. £85
35. SG 36a 2d THE 'NE' RE-ENTRY. Plate 6. A superb example with a crisp numeral cancel. The Re-entry is perfectly clear. £180
36. A BRUNSWICK STAR on SG 39 1d. A wonderful strike. Clear and upright. **£25**
37. SG 40 1d plate 27. A light 422 numeral of Kingston. Lettered AD showing an excellent re-entry. £45
38. USED IN GIBRALTA. SG 40 1d plate 43 with a crisp 'G' cancel. **£45**
39. SG 40 1d. A lovely fresh block of 4 with crisp 176 numerals of Chelmsford. **£65**
40. SG 41 1d Deep Rose-Red. A quite lovely strip of six tied to petite envelope to PRUSSIA by upright 224 numerals of COWBRIDGE and a crisp, large, continental CDS in red. A crisp COWBRIDGE CDS and 'PD' perforations a little dulled at either side but so very pretty. RARE AND OUTSTANDING. £325
41. SG 43 1d plate 76. A side marginal mint block of 4. One adhesive with light hinge trace. Fine inscriptional detail. **£120**

**Bird In Hand**

Bird In Hand, Lancaster county, Pennsylvania, U.S.A., took its name from an old hotel sign.

The sign pictured the proverb 'a bird in the hand is worth two in the bush' and portrayed a boy holding a bird in his hand and two birds in the bush beside him.



9.



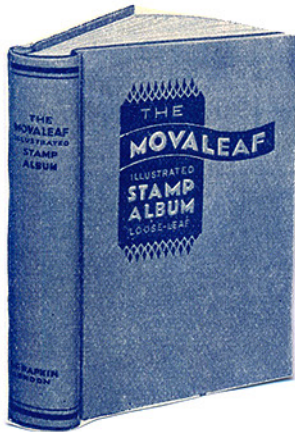
40



43



44



42



49



50



53



51



52



48



The Penny Post Staff. 1964. 1/2d carriage of 1790.

*On October 4, 1709, a surprising individual, by name Charles Povey, impudently challenged the Post Office monopoly by starting a privately run enterprise which he called the "Half-Penny Carriage". It was modelled on very similar lines to the Penny Post of Dockwrs, except it was confined to the busy parts of London and Westminster and to the borough of Southwick. Receiving houses were set up in shops and small business, and for the price of one halfpenny Povey undertook to collect and deliver letters and packages. He popularised the use of bellmen by having messengers patrol the streets every half hour ringing a bell so that people, on hearing, could be waiting with their letters and spared the trouble of going to one of the receiving houses. Doubtless the idea was intended by way of advertisement, but people quickly appreciated its convenience and his undertaking was popular and successful. Naturally it was quickly suppressed by the Crown, Poveys half-penny carriage lasted exactly seven months, when proceedings were taken against him and he was fined £100, along with several of his bell ringers and shopkeepers who having acted as receivers were fined for the part in the venture.*

42. SG 43 1d plate 191. A SHEET MARGINAL BLOCK OF 15. Lovely and fresh with just two adhesives hinged. Otherwise fully UNMOUNTED MINT. A super multiple. £385
43. PLATE 225. SG 43 1d. A lightly used example with a partial upright numeral cancel. Both plate numbers are perfectly clear. A fine example. £425
44. A RED 'PD' in circle. SG 45 2d blue plate 9. A light numeral cancel. The red 'PD' in clear and crisp. £40
45. SG 45 2d BLUE PLATE 12. SUPERB MINT. Exceptionally fresh. Glorious colour. Wonderfully centred with single hinge remain. THE RAREST PLATE IN MINT CONDITION. £825
46. SG 47 2d plate 14. PRISTINE UNMOUNTED. Side of sheet marginal also unmounted. Wonderfully centred. AS ISSUED QUALITY HERE. £425
47. SG47 2d Deep Blue plate 15. A choice MINT UNMOUNTED adhesive. Quite lovely. £350
48. SG 48 1/2d plate 1. Tied to a 'national Society, Kingston Square' printed letter by a crisp London CDS and District duplex alongside. A good Stourbridge CDS at reverse. £90
49. SG 48 1/2d plate 10. A fine MINT UNMOUNTED example. £75
50. SG 48 1/2d plate 10. VFU a crisp GLASGOW steel CDS. £45
51. SG 48 1/2d plate 13. With half a crisp steel CDS. £35
52. SG 48 1/2d plate 15. A lovely crisp IPSWICH steel CDS. £45
53. SG 60 6d PURPLE. With full margins on all sides and showing portions of three adjoining adhesives. A featherlight cancel. Very fine indeed. £450
54. USED IN FRANCE. SG 66 4d Rose-Carmine. A very fine Diamond spotted cancel. Crisp and complete. £85
55. SG 69 6d Deep Lilac. SUPERBLY MINT. A wonderfully fresh example of this scarce shade with full original gum and faintest hinge trace. Rare to find. £725

The Morning Chronicle

3rd May 1840 on the NEW STAMP. "A word or two touching the stamp with the glutinous wash. It is a little bit of square paper about three quarters of an inch long by half an inch broad, and as it chanced to be reversed when we first saw it in the innocency of our hearts we mistook it for a patch of german corn plaster, however, on turning it over, we saw it contained what purports to be the head of her Majesty very ill-executed with the word postage above and 'one penny' below. This badge is to be affixed on the right hand of the address of the letter and in the upper corner."





54



56



57



58



60



67



59



68



61



62



63



65



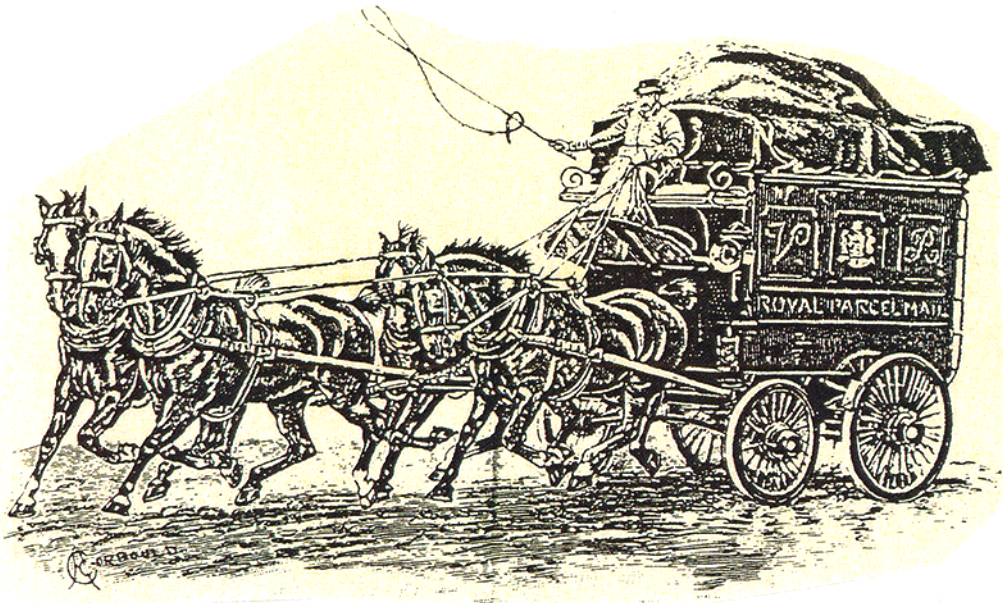
66



Handsone Embossed Green and Gold Metal Box of 1,000 Hinges with black Watermark Detector Panel sunk into the underside. No. 20 (Medium Size). Price 8d.







56. SG 80 4d Pale Red. Very well centred and a light but clear London steel CDS. Difficult on this issue. **£120**
57. SG 89 1/- Deep Green. USED IN GIBRALTA. Wonderful deep colour. A crisp, upright A26 numeral. Lovely adhesive. **£140**
58. SG 90 1/- Green. Very fine used indeed. With the barest hinge trace of a numeral and CDS. The colour is fabulous. **£90**
59. SG 103 3d plate 8. A handsome block of 4 cancelled CONTRARY TO REGULATIONS by two very fine STAFFORD steel CDSs. **£240**
60. A lovely BILSTON CDS. SG 103 3d plate 8. What a cracking strike. **£55**
61. SG 103 3d plate 9. A featherlight ABERDEEN steel CDS. **£65**
62. SG 108 6d plate 8. With a crisp near complete LONDON steel CDS. **£65**
63. SG 108 6d Dull Violet plate 9. Bottom of sheet marginal with a complete 498 numeral of Manchester perfectly struck. **£45**
64. SG 113 10d Pale Red-Brown SUPERB MINT. Flawlessly centred MM with full original gum. Very choice and a perfect shade. A Sorani certificate accompanies. **£2200**
65. SG 117 1/- plate 5. With a finely placed HALIFAX steel CDS. **£45**
66. SG 117 1/- plate 5. With a crisp DUBLIN steel CDS. **£40**
67. SG 128 10/0 Greenish-Grey. With a lightly placed Registered duplex cancel. The colour is excellent. **£525**
68. SG 131 10/- Grey-Green. A superb example. Particularly strong colour. A crisp, complete YORK ST. MANCHESTER steel CDS. With delicate blueing to the paper. AN OUTSTANDING ADHESIVE. **£3300**

The head of a large office in the south received one day, a delicately scented missive, asking him personally to recommend a nice, quiet Baptist family into whose bosom a young lady, daughter of the letter-writer, could be received as paying guest. The postmaster was particularly requested to inquire on the following points, the lowest terms per week, what kind of table was kept, and what laundry arrangements could be made, and finally the applicant omitted a stamped addressed envelope, thinking possibly that postmasters correspondence would travel free.





71



74



81



72



73



83



76



77



78



79



80



87

#### FROM POSTBOY TO AIRMAIL.

A girl was sent to the bank with a pass book and cash to pay in. She had never seen a pillar-box before, save in miniature form. One of the latter she possessed, into which she placed all her savings. When her mistress asked for the pass book she explained that she had put it with the money in the bank. "But who did you see?" asked the bewildered mistress. "I didn't see anyone, though I looked for a long time through the slit".

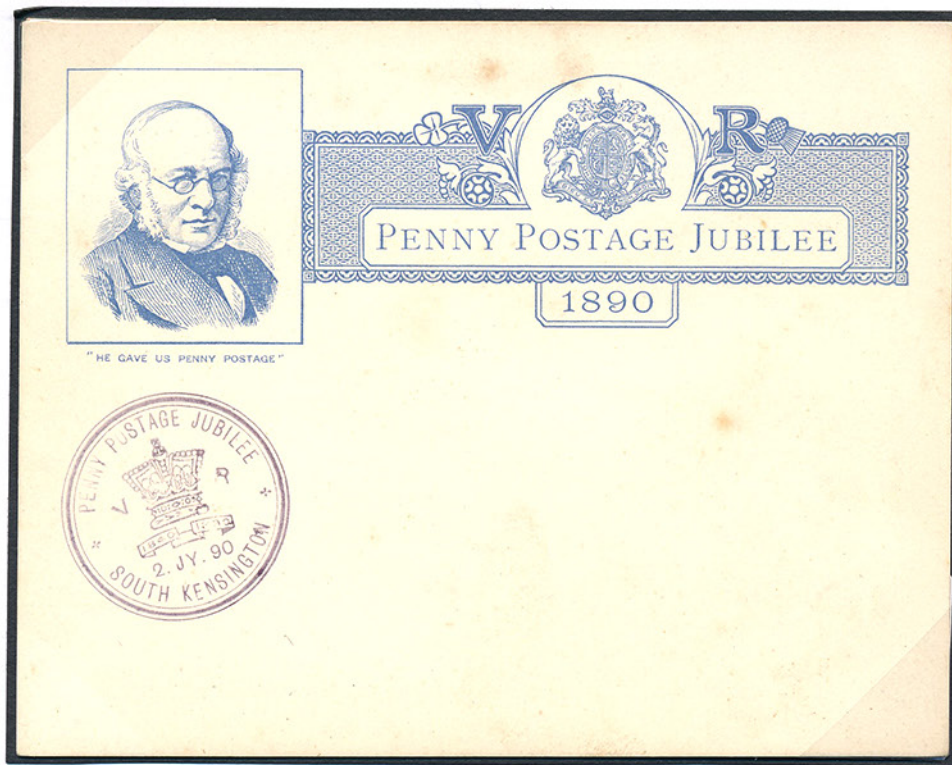


**Behind the Letter Box.**

Among the freaks with which practical jokers have tested the ingenuity of the Post Office, pride of place must surely be taken by the halfpenny stamp which was sent through the mail with the address and a message written on the back. It is remarkable that the stamp was not lost among the mass of packets with which it was mixed, but it was safely delivered and the postal staff had their own back on their tormentor by surcharging the missive a penny, postage due, as the message on the back made it liable to full letter rate. Among many other things which have been sent through the post are a rabbits skull, a cigarette, a slice of potato, a linen collar, a biscuit, and a turnip. All these things were unwrapped the address being written on the actual object. Still more ingenious and a striking example of the lengths to which these leg pullers will go, was the 'postal packet' consisting simply of a piece of delicate lace, with the name and address done in crochet work.

69. SG 137 £5 ORANGE. A fine example without any fault. Lovely rich colour and a crisp complete SOUTH EASTERN DISTRICT steel CDS. **£2850**
70. SG 141 2 1/2d plate 16. SUPERB MINT. Wonderfully centred. Lightest hinge trace. Very fine. **£250**
71. SG 143 3d Rose plate 14. Perfectly centred. A crisp CHARING CROSS steel CDS. **£70**
72. SG 144 3d Pale Rose plate 11. Superb mint. Pristine MM with full original gum. Quite wonderfully centred. A lovely pale shade. **£275**
73. SG 152 4d Vermilion plate 15 USED IN ST. THOMAS. A part CDS and C51 numeral. A lovely light cancel. **£95**
74. SG 156 8d. A CORNER OF SHEET IMPERFORATE COLOUR TRIAL IN PALE ORANGE YELLOW OVPTD 'SPECIMEN'. Hinge remains couple light gum wrinkles. VERY STRIKING INDEED. **£325**
75. SG 156 8d Orange. SUPERB MINT. Outstanding centring. Glorious depth of colour. Single hinge remain with full original gum. MOST RARE THIS FINE. **£550**
76. SG 157 2 1/2d Blue plate 23. A superb MANCHESTER steel CDS. Lovely strike. **£25**
77. SG 158 3d plate 21. Perfectly centred and VFU a crisp steel CDS. **£70**
78. SG 165 1/2d Pale Green. With a fabulous LEEDS steel CDS. **£40**
79. SG 167 1 1/2d with a crisp BURNLEY steel CDS. **£35**
80. SG 169 5d INDIGO. With a crisp BURNLEY steel CDS. **£90**
81. SG 172 1d CONTROL 'G' WITHOUT JUBILEE LINE. From the 1<sup>st</sup> printing. A fine mint unmounted pair. Very difficult to find. **£100**
82. 1890 PENNY POSTAGE JUBILEE post card bearing the SMALL TYPE 1<sup>st</sup> DAY CANCEL. (Handstamp No. 2). Lovely quality. **£60**
83. SG 185 £1 Brown-Lilac. A lovely, bright and fresh example. Well centred and cancelled by a crisp CHARING CROSS oval. Most attractive. **£1250**
84. SG 192 4d. Superb mint. With single hinge remain and quite wonderful colour. **£220**
85. SG 262 2/6d Slate-Purple chalky paper. M49 (3). A superb corner Shaftesbury Ave CDS lightly placed. Stunning colour here. **£140**
86. SG 264 5/- Deep Bright Carmine. A lightly applied CDS on a choice single. Reverse shows a very fine "RHODES stamp dealer 45 Lombard St London" mark. Very lightly applied. Rhodes was a dealer who started business in the 1890s. Most unusual. **£130**





85



86

82



88



89



90



91



95



92



93

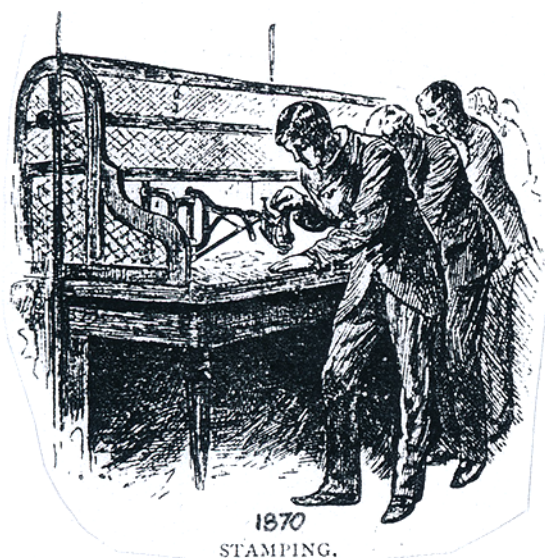


94



99





WHEN POSTMEN WERE GIVEN STRIPES FOR GOOD CONDUCT

87. SG 287 M10 (4) 1 1/2d Dull Reddish Purple and Green. A light corner CDS. **£20**
88. SG 294 5d deep Plum and Cobalt Blue. M30 (4) with a featherlight steel CDS. **£25**
89. SG 311 M44 (6) 10d Dull Reddish Purple and Carmine. A crisp Commercial Rd CDS. **£40**
90. SG 314 M47 (5). 1/- Green and Carmine. A fine GALAH SHIELDS steel CDS. **£35**
91. SG 314 M47 (5). 1/- Green and Carmine. With a featherlight steel CDS. **£25**
92. SG 316 2/6d dull Reddish Purple. VFU a pristine FINCHLEY GREEN steel CDS. Lovely quality. **£110**
93. SG 319 10/-. A very fine single. Well centred, wonderfully fresh and a featherlight CDS which surrounds a clear Kings portrait. **£350**
94. SG 319 10/- Blue. The lightest steel CDS on a very choice example. **£325**
95. SG 326i 1/2d Bluish-Green watermark inverted. Very fine. A London CDS. **£55**
96. SG 401 5/- Pale Rose-Carmine. N66 (2). A pin sharp and featherlight steel CDS. Very fine. **£180**
97. SG 402 10/- INDIGO BLUE. PRISTINE UNTOUCHED MINT UNMOUNTED. Perfectly centred and in AS ISSUED condition. **£950**
98. SG 409 5/- Bright Carmine with a featherlight steel CDS. The colour is strong and vivid. **£275**
99. SG 411 10/- Deep Blue De la Rue printing. A BLOCK OF FOUR. Outstanding colour and MOST RARE IN MULTIPLES. **£850**
100. SG 086 5d BOARD OF EDUCATION. A VERY RARE OFFICIAL. A perfectly centred example. Lightly used with parts of three steel CDSs. Outstanding colour and freshness. A minor corner crease – barely visible. FEW EXAMPLES EXIST IN USED CONDITION. Wenvoe and Philatelic Expertising certificates accompany. A glorious addition to any collection. **£3850**