



JOHN LAMONBY

FINE BRITISH & EMPIRE ADHESIVES

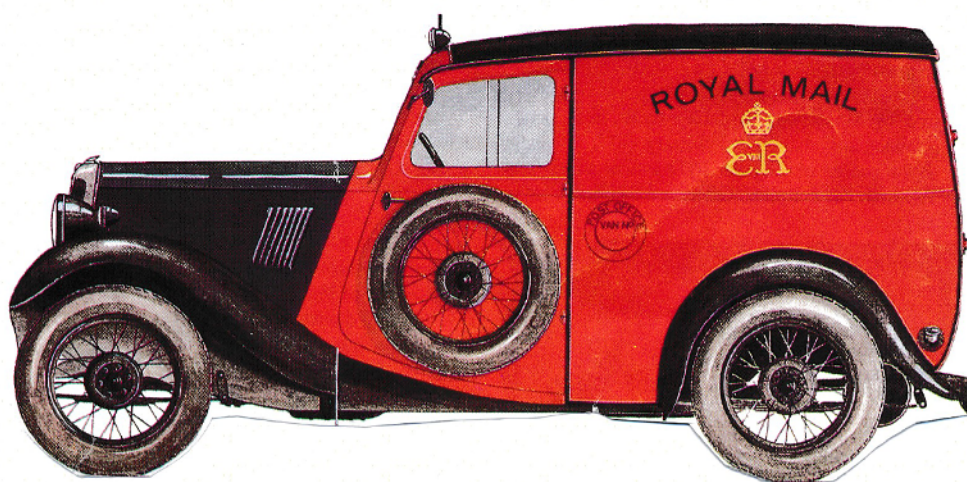


211 Old Castle Street, Portchester
Hampshire, PO16 9QW

E-mail: LAMONBY@AOL.COM

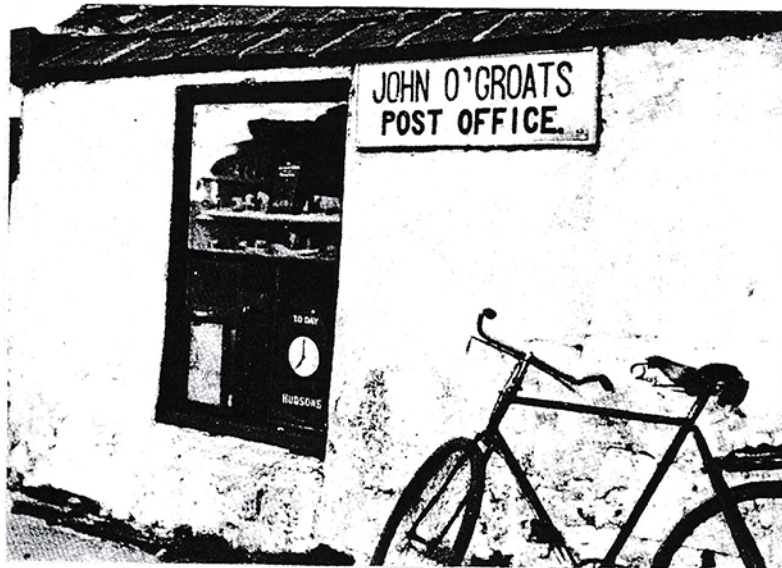
02392 378035 24 HR ANSWERPHONE
02392 201096 FACSIMILE

A FEW PRETTY ADHESIVES.



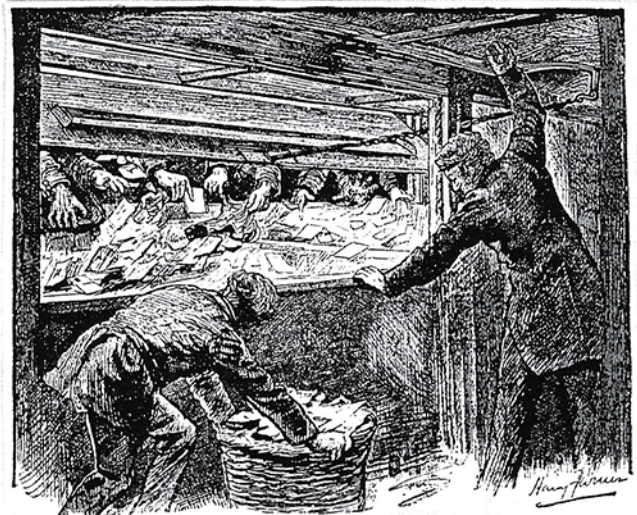
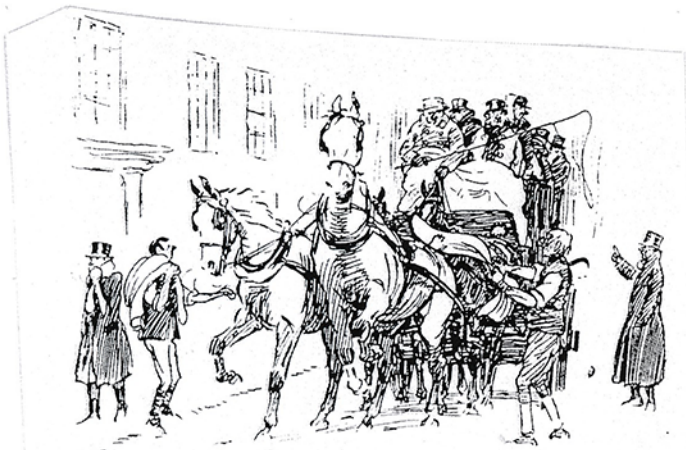
Another little spread of all sorts.

1. MAY 8th 1840. Entire letter of 3 pages to AYR. With handstruck 1 endorsed 'PP'. A very good GATEHOUSE box for May 8 1840. **£185**
2. 1d grey black plate 1a. Showing moderate plate wear. Wonderful balanced margins and a vivid orange – red maltese cross. A STUNNER. **£450**
3. Plate 1a 1d grey black showing plate wear. A fabulous single lettered TJ. Good – large – huge margins and a dazzling orange – vermilion Maltese cross. **£475**
4. 1d black plate 1b. An outstanding single lettered JE showing a horizontal guide line through J square and traces of re – entry N E square. Very generous margins and a crisp and upright maltese cross in red. **£375**
5. PLATE TWO CANCELLED IN BLACK. 1d black lettered MB. 4 very choice margins and a part crisp maltese cross. Very fine indeed. **£350**
6. 1d intense black plate 4. A MAGNIFICENT SINGLE. Lettered TL with margins cut good – large – ENORMOUS . A VIBRANT BRIGHT ORANGE – RED maltese cross. A fabulous shade and the last adhesive in the sheet. **£425**



The first or last Post Office

7. 1d intense black plate 6. An outstanding example lettered TG with margins cut good – large – ENORMOUS. A lovely crisp corner maltese cross in bright orange – red. **£385**
8. PLATE SIX. AN UNRIVALLED ADHESIVE. Lettered OA. HUGE – ENORMOUS margins and a complete and upright Maltese cross in deep red. A breath taking single. **£750**
9. Plate 6 1d black. A HUGE ADHESIVE lettered PE with full generously cut margins and a vivid orange – red maltese cross. **£385**
10. Plate 7. 1d black lettered OL with excellent margins being part sheet marginal with inscriptional detail and a crisp, lightly applied Maltese cross in black. **£625**
11. 1d black plate 9. A lovely example lettered ID. Very well cut margins and a crisp black Maltese cross. **£425**
12. BLACK PLATE ELEVEN. 1d in red – brown. Lettered LJ. Very well cut and a crisp complete Maltese cross. **£90**



BEHIND THE RECEIVER AT THE GENERAL POST OFFICE
AT SIX O'CLOCK.



1



2



3



4



5



6

Behind the Stamp Album. Famous Philatelists.

The most famous philatelist of all was the late King George V. It was at the London Philatelic Exhibition in 1890 that the public first heard of the philatelic inclinations of Prince George as he was then, when the Duke of Edinburgh opened the Exhibition and explained that his nephew was a keen collector. In 1893 Prince George, then known as the Duke of York, became Honorary Vice-President of the London Philatelic Society, and President three years later. When he ascended the throne he relinquished the Presidency of the Society and became its patron. His Majesty was an active member of the Society and in 1904 he read a paper to the members - Notes on the Postal Issues of the United Kingdom during the Present reign.



7



8



9



10



11





13. Plate 1. 2d blue. A magnificent good – LARGE margined single lettered MI. Tied to piece by a crisp black Maltese cross. Outstanding. **£525**
14. 1840 2d blue plate 1. A very fine pair. Lettered QJ – QK with full margins and two lightly placed Maltese crosses in black. A most attractive pair. **£750**
15. 1840 2d blue pate 2. A MOST ATTRACTIVE PAIR. Lettered TA – TB. With fine full margins and two lovely strikes of the maltese cross in black. **£850**
16. 1840 2d blue plate 2 CANCELLED IN RED ON ENTIRE to PETWORTH. Lettered DK with margins cut good to huge. Very lightly cancelled and tied by a red maltese cross. On reverse a CDS in the same ink for NOV 28 1840. A lovely black wax seal with intricate motif. At front to left a superb TRURO CDS in blue for NOV 26. Content of the letter written by a teacher and refers to the running of his school. Two fold faults repaired with hinges. MOST RARE TO FIND PLATE TWO CANCELLED IN RED ON COVER. Superb uncreased. **£2200**
17. Number 2 in maltese cross on 1d red brown plate 30 lettered SB. With good – HUGE margins and a wonderful strike. **£110**
18. Number 10 in maltese cross. A crips upright strike on 1841 1d plate 35. With 4 excellent margins. **£130**
19. A DUBLIN DISTINCTIVE MALTESE CROSS on 1841 1d lettered GI. Perfectly cut. Crisp and upright strike. **£80**
20. A RICH BLUE MALTESE CROSS on 1841 1d plate 28. Lettered RG with margins cut good – large – huge. An almost complete strike in a bold shade of blue. **£250**



12



14



15



13



17



18



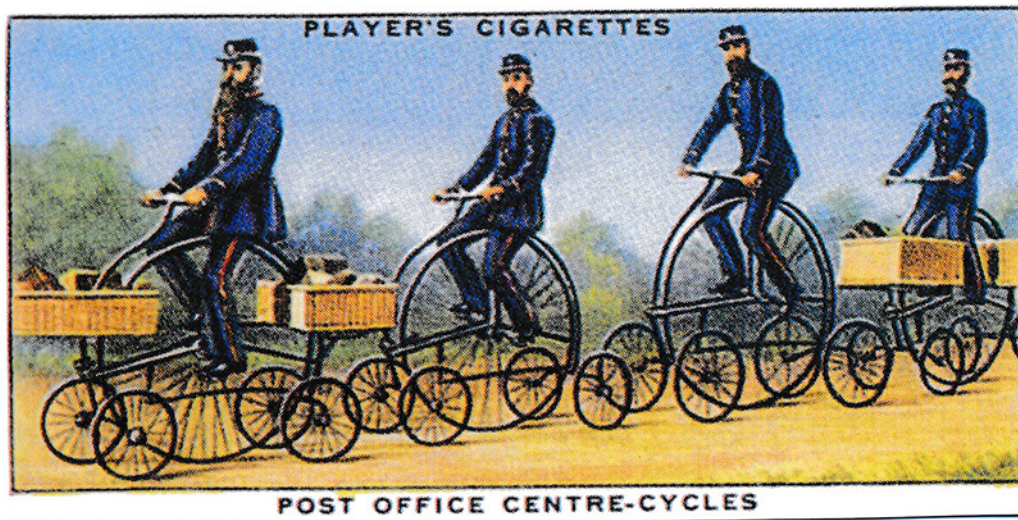
19



20



22



27



25



23



24



21



26



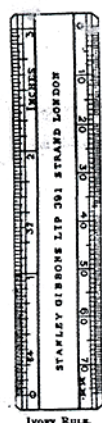
29

ADVERTISEMENTS

IVORY POCKET RULE.

For Measuring Stamps, Surcharges, &c.

Most useful for detecting Forged Surcharges.



* *
One side divided
into inches,
and subdivided
up to 1/64 inches.

The other side
divided
into Millimetres
and
Centimetres.

Price
3/6.

Post-free, penny extra.
Abroad, fourpence extra.

Supplied in
Neat Case for Pocket.



CASE TO CARRY RULE
IN WAISTCOAT POCKET.

Photographs of the Two Rarest Stamps in the World, the
1d. and 2d. "Post Office" Mauritius of 1847.

This pair was purchased by STANLEY GIBBONS, Ltd., for £680 cash.

Price 1/- post-free, on neat gilt and black card mount.

STANLEY GIBBONS, LIMITED,
391, STRAND (Opposite Hotel Cecil), LONDON, W.C.

1910

General Post-Office, Aug. 10th, 1792**A CAUTION.**

To all Coach-Masters, Carriers, Higlars, Ship
Masters employed Coastwise, Newsmen,
Watermen and Others.

HAVING received repeated Information that Letters
are illegally collected, carried and delivered, to the great
Injury of the Public Revenue, and it being the wish of this
Office rather to prevent than punish, and that the unwary may
be made acquainted with the Penalties they are subject to; I am
directed to give this Public Notice, that from the Date hereof,
every Effort will be used to detect and punish all Persons so
offending.—The Penalties for which are FIVE POUNDS
FOR EVERY LETTER SO COLLECTED, CARRIED,
OR DELIVERED, WHETHER FOR HIRE OR NOT,
AND ONE HUNDRED POUNDS, FOR EVERY
WEEK SUCH PRACTICE IS CONTINUED.

By Command of the Postmaster General,

Johnson Wilkinson, *Surveyor.*

21. 'P' CONVERTED TO 'R'. 1841 1d. A pair. Lettered RB – RC. Plate 31. Excellent margins with maltese cross cancellations. The variety is perfectly clear. **£95**
22. 1841 1d plate 36. Side marginal with a crisp maltese cross showing inscriptional detail. Full margins but just barely touched at L square. Very attractive. **£90**
23. SG 8a 1d plate 26. Very blued paper. Lettered TA. Stunning single with a crisp complete Maltese cross. **£55**
24. A BLUE NUMERAL. 1844 1d lettered BB. Perfect margins and a lightly applied numeral cancel in blue. **£115**
25. SG 8a 1d red brown plate 132 on deeply blued paper. Lettered BI. With HUGE – GIGANTIC margins tied to envelope to Hackney by a 635 numeral of Reading. Superb blue reading CDS and red receivers on reverse together with a very fine intact wax seal in brown. **£70**
26. SG 9 1d pale red – brown plate 87. Lettered A E being part sheet marginal. A partial numeral cancel. A lovely shade and a big stamp. **£55**
27. SG spec B2k. 1852 1d deep red – brown on LAVENDER TINTED PAPER. Plate 135. A FABULOUS BLOCK OF FOUR CANCELLED CONTRARY TO REGULATIONS by 3 X 852 numerals of Welshpool. Lettered CB – DC with outstanding full margins. The reverse with excellent IVORY HEADS. Very rare in multiples and of EXHIBITION QUALITY. **£1100**
28. 18 Feb 1846. Entire from Halifax to Ripponden, with third type Halifax mark: the ringed "PAID/D/1". This mark was used from 1845 to 1849. The letter relates to a house purchase for

7.



28



30



32



34



31



33



35



36



38



39



41



40



42



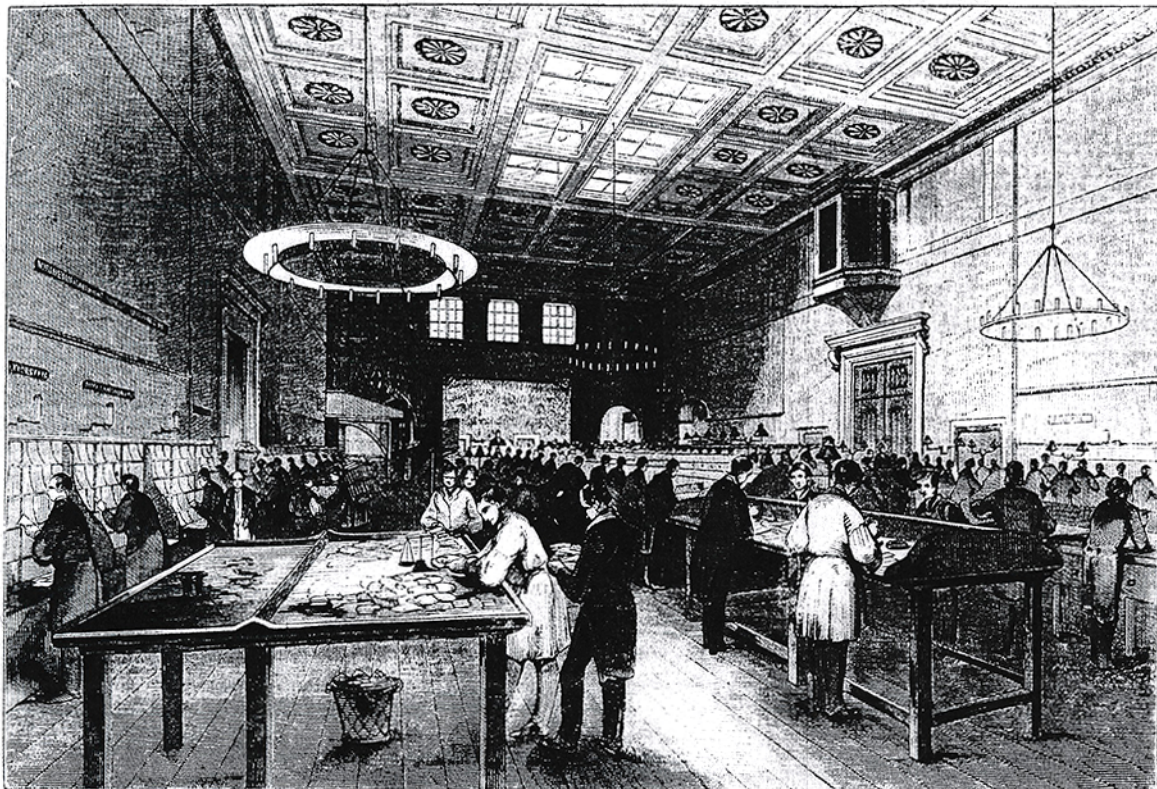
37



43



44



THE INLAND LETTER OFFICE.
1844.

which the vendor requires £320. The solicitor is haggling on behalf of the client and suggesting a reduced sum of £300!. The entire in very choice condition. **£65**

29. 1841 2d blue plate 3. A fine well cut example lettered QL with a crisp maltese cross at **£60**
30. SG 14. 1841 2d blue plate 3. A delightful pair. Lettered BE – BF. With excellent generously cut margins and crisp upright maltese cross cancelations. **£200**
31. 1841 2d pale blue cancelled in blue. From plate 3 lettered RB with 4 excellent margins and a neat numeral cancel in blue. Originally from a pair and a photocopy of a Royal certificate accompanies. **£375**
32. Sg 17 1d plate 190 A PAIR cancelled contrary to regulations by a single upright 186 diamond of Dublin. **£85**
33. SG 20a 2d blue plate 5. Very well centred. Lettered DD. A featherlight numeral cancel leaving features clear. Lovely. **£165**
34. SG 29 1d plate 33. A pair. With a complete Liverpool spoon cancel very nicely struck. **£45**
35. Sg 35 2d deep – blue plate 6. Tied to piece by a 186 numeral and a DUBLIN CDS alongside. Exceptionally deep shade – flawlessly centred. **£70**





45



54



46



47



48



49



50



51



52



56



53



58



59



57



60



61

36. SG 40 1d GROSS MIS – PERF showing inscriptional detail. Very striking. £75
37. RE-ENTRIES. SG 43 1d plate 71. Adhesive lettered TK and MK. These are two of just 4 re – entries that exist in the whole series of 1d plates. **£75**
38. SG 43 1d plate 153. A very choice and complete CARRIGAHOLT steel CDS. Outstanding. £60
39. SG 43 1d plate 157. A block of six with crisp upright DROGHED steel CDSs. **£185**
40. SG 43 1d plate 213. VFU CDS at **£40**
41. SG 43 1d plate 220. A very choice side of sheet marginal mint unmounted block of six. Showing inscriptional detail and full marginal ornament which marks the centre of the sheet. **£375**
42. SG 45 2d blue plate 12. Superb mint. Exceptionally fresh. Glorious colour. Wonderfully centred with single hinge remain. THE RAREST PLATE IN MINT CONDITION. **£825**
43. AN IMPRIMATUR. SG 48 1/2d plate one. Very generously cut margins. A rare adhesive in choice condition. **£625**
44. SG 48 1/2d plate 4. A corner CDS leaves profile untouched. **£45**
45. SG 62 4d deep bright carmine J47 (1) with rich vibrant colour. A partial numeral cancel and crisp CALAIS CDS. A lovely combination of cancels. **£180**
46. SG 68 6d lilac. Perfectly centred with half an upright steel CDS. Very fine. **£110**
47. SG 69 6d deep lilac. Superb mint. A wonderfully fresh example of this scarce shade with full original gum and faintest hinge trace. Rare to find. **£725**
48. SG 95 4d deep vermilion plate 11. SUPERB MINT UNMOUNTED. A dazzling adhesive. MOST RARE. **£450**
49. SG 102 3d deep rose plate 5. An outstanding MALTA steel CDS. Very fine indeed. **£125**
50. SG 114 10d deep red brown. A superb example being sheet marginal showing 3s 4d (per row of 4) in margins. Perfectly centred with a complete WORMWOOD ST steel CDS and parts of 2 others . A rarely seen postmark and a wonderful shade. **£425**
51. SG 117 1/- plate 4. With a light 114 telegraphic circle smack in the middle. **£45**
52. STOCK EXCHANGE FORGERY of SG 117 1/- plate 5 SHOWING IMPOSSIBLE LETTERING. Very choice indeed with a STCK EXCHANGE CDS. A wonderful example. **£985**
53. SG 117 1/- plate 6. VFU a crisp RETFORD steel CDS. **£25**
54. SG 117 1/- plate 6. A magnificent block of eight. Crisp upright SPRING ST. PADDINGTON steel CDSs. No perforation splits. Exceptional quality. **£550**

Behind the Letter Box. Chesmore 1938.

Among the freaks with which practical jokers have tested the ingenuity of the Post Office, pride of place must surely be taken by the halfpenny stamp which was sent through the mail with the address and a message written on the back.

It is remarkable that the stamp was not lost among the mass of packets with which it was mixed, but it was safely delivered and the postal staff had their own back on their tormentor by surcharging the missive a penny, postage due, as the message on the back made it liable to full letter rate. Among many other things which have been sent through the post are a rabbits skull, a cigarette, a slice of potato, a linen collar, a biscuit, and a turnip. All these things were unwrapped, the address being written on the actual object. Still more ingenious and a striking example of the lengths to which these leg pullers will go, was the "postal packet" consisting simply of a piece of delicate lace, with the name and address done in crochet work.



69



62



64



69



65



66



67



68



70



71



72



74



75



76



77



73



78



79

The Stamp Collector 1901

"Queen Bee" as Postmistress

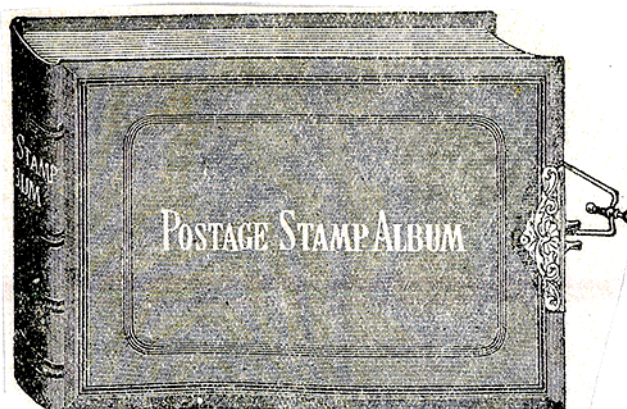
Much to the annoyance and inconvenience of the local postal authorities, a swarm of bees recently took possession of the letter box in Kilbridge, near Mullinger, all attempts to dislodge them have proved unsuccessful, and the mails still remain within the letter box so that the mails like the males are literally drones. The Postmaster General has liberally offered a reward of 2/- to anyone who will effect a clearance of the busy occupants, but no one has undertaken the task, and it is feared we must await Lord Kitcheners return. Mr King J P vice-chairman of the Westmeath County Council claims ownership of the swarm has served notice on the postal authorities that if bees are injured in removal he will claim compensation.

55. SG 117 1/- green. Plate 7 VFU with half a crisp steel CDS. **£65**
56. SG 130 5/- ROSE PLATE 4. Perfectly centred with outstanding colour and a crisp complete CAMBRIDGE steel CDS. An exceptional example. The delicate blueing is clear to see. **£1850**
57. SG 131 10/- grey – green. A superb example. Particularly strong colour. A crisp complete YORK ST MANCHESTER steel CDS. With delicate blueing to the paper. AN OUTSTANDONG ADHESIVE. **£3300**
58. SG 142 2 1/2d plate 20. Superb mint. Wonderfully centred with lightest hinge trace. **£220**

LAYAWAY.

You are most welcome to layaway any items that you would like to purchase at a later time. Often a stamp might come up at the wrong time. Layaway will stop you missing that must have item.

59. SG 144 3d pale rose plate 20. With a crisp CURREN open town steel CDS. **£90**
60. SG 147 6d plate 14. Superb mint. Perfectly centred and lightly hinged. A lovely fresh single. **£225**
61. SG 141 2 1/2d plate 7. With a crisp London CDS and part duplex cancel **£30**
62. SG 141 2 1/2d plate 15. With a light steel CDS. **£60**
63. SG 142 2 1/2d blue plate 17. Unmounted mint showing sheet current number in attached margin. Minor tone. Ovpted specimen. **£160**
64. SG 143 3d rose plate 14. Perfectly centred. A crisp CHARING CROSS steel CDS. **£70**
65. SG 143 3d rose plate 20. A crisp and upright ASTON ON CLUN steel CDS. Lovely quality. **£90**
66. SG 147 6d grey plate 15. With a lightly placed Belfast steel CDS. **£85**
67. SG 153 4d sage – green plate 15. With wonderful depth of colour and a crisp corner CDS. Lovely quality. **£240**





80



81



87



82



83



85



84



86



88



89

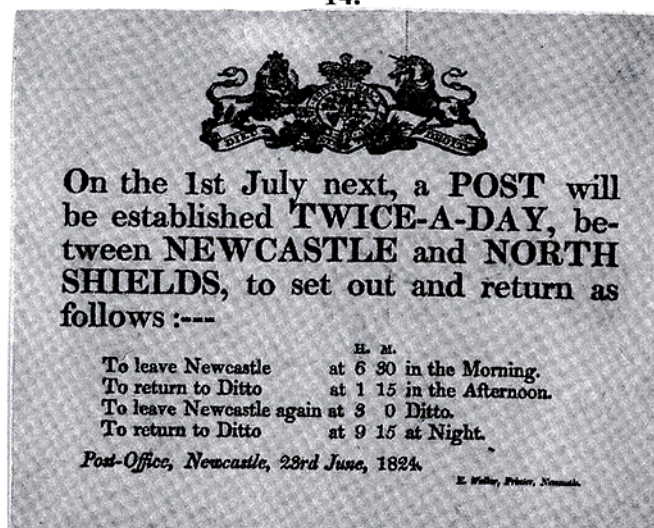


90



91





68. SG 156 8d orange. A good ARTIST DRAWING of the adopted design in the issued colour on buff paper. Artists drawings of this issue are known around a printed head. OF UNKNOWN ORIGIN. VERY IMPRESSIVE. **£200**
69. a A FINE MIXED VALUES ENVELOPE TO HONG KONG. Bearing SG 157 2 1/2d plate 21, SG 166 1d, SG 171 1d 14 dots and SG 165 1/2d. All cancelled by crisp DORCHESTER squared CDSs. Reverse with crisp CERNE and Hong Kong CDSs. A lovely fresh mix of values. **£525**
70. SG 162 6d on 6d. A VFU example with a crisp CHELMSFORD steel CDS. With RPS certificate. **£115**
71. SG 165 1/2d pale green. With a fabulous LEEDS steel CDS. **£40**
72. USED IN MALTA. SG 165 1/2d pale green. A wonderfully crisp steel CDS. **£60**
73. SG 168 2d pale rose with a crisp Aberdeen steel CDS. **£55**
74. SG 175 2/6d lilac on blued paper. Perfectly centred a lovely crisp ARDROSON double ringed CDS for April 25 1888. The delicate blueing is clear to see. **£875**
75. SG 175 2/6d lilac on blued paper. Very well centred with a crisp London hooded CDS for May 13 1887. A nice early date. **£625**
76. SG 180 5/- rose. A crisp CAHIR CDS for July 25 1885. Cahir is in county Tipperary. **£90**
77. SG 183 10/- Ultramarine. A very choice example. A lovely crisp LEEDS steel CDS. **£375**
78. SG 183 10/- ultramarine. Perfectly centred. A lovely single with a crisp Glasgow steel CDS. **£350**
79. SG 1891 3d with wonderful colour and a crisp BILSTON steel CDS **£70**
80. SG 194 6d. Superb full colour. A crisp CHURCHBRIDGE steel CDS. **£90**
81. SG 209 9d with a crisp SOUTHPORT steel CDS. Very fine. **£30**
82. SG 214 1/- with a crisp WORCESTER steel CDS. Vibrant colours. **£55**
83. SG 232 M19 (1). 3d dull purple / orange – yellow. A crisp and complete steel CDS. **£20**
84. SG 236a , 242a and 257a in combination on piece 'FOR POSTAGE STAMPS'. Crisp Bridge of Allen CDSs. Pretty **£55**
85. SG 239 4d brown – orange. Very well centred and VFU indeed a lightly placed steel CDS. **£60**



93



99



96



92



94



97



98



95



100





Interior of an Old Post-Office.

86. SG 244 M28 (2). 5d slate purple and ultramarine. A lovely BLANDFORD steel CDS. **£20**
87. SG 245a 6d. A SUPERB SHEET MARGINAL GUTTER BLOCK OF 4. With three adhesives pristine mint unmounted. **3180**
88. SG 260 2/6d. With a perfectly struck THREADNEEDLE ST registered oval. **£75**
89. SG 262 2/6 slate purple (chalky paper). A lovely crisp Manchester double ringed CDS. Clear and complete. **£75**
90. SG 263 5/- bright carmine. Perfectly centred a complete and featherlight SUTTON steel CDS. **£95**
91. SG 319 10/- deep blue. M54 (3). A choice untouched mint unmounted example. A Hendon certificate accompanies. **£1450**
92. SG 393a 9d olive green. VFU a light corner CDS. **£20**
93. SG 404 £1 dull blue – green Seahorse. A pristine untouched mint unmounted example. In all respects outstanding. **£3250**
94. SG 451 5/-. A pair with crisp steel CDSs. Both well clear of Kings portrait. Pretty. **£60**
95. SG 450, 451 and 452. 2/6d – 10/- Seahorses in CDS blocks of four. Minor wrinkles to 2/6d and 5/-. A very striking trio of blocks. **£240**
96. Sg 016 £1 green IR Official. With a crisp and light Glasgow Accounts Branch oval and part of another cancel lower corner with excellent colour and freshness. **£725**
97. SG 050 6d Army official. Pristine quite untouched mint unmounted. **£140**
98. SG 067 9d GOVT PARCELS. With a crisp NORWICH steel CDS. **£65**
99. SG 068 1/- GOVT Parcels. With a crisp STAFFORD STATION CDS. Clear and upright. The colour is excellent. **£120**
100. SG 078 1/- GOVT PARCELS. Wonderful colours and a lightly placed steel CDS. **£95**